

Locking lever cylinder eCLIQ NT01

19 mm Diameter, laterally flattened to 16 mm -without key, without locking lever-

Product description

- Power is supplied exclusively via the key (no battery in the cylinder)
- Ideal for application in letter boxes, lockers and metal cabinets with cylinder lever locks
- Available as rotary secured or electrical version (V=)
- Standard with core output for mounting of locking levers (ABTR=M10S8)
- Optionally available with additional core outputs (ABTR=)
- Brass cylinder housing components
- Matt nickel-plated surface (OF=MV)
- Fixing with M19 x 1 x 5 housing nut
- Standard locking path and locking lever path 90° left or right (AUS=0) Key withdrawal at 0°
- Optionally locking path and locking lever path 180° left or right (AUS=180) Key withdrawal at 0° and 180°
- Maintenance-free cylinder
- Dust and rain cover available (SUR=1) IP55
- Optionally available for use in potentially-explosive atmospheres in Zone 1 (ATEX=II 2G Ex ib IIC T4 Gb)

Scope of delivery

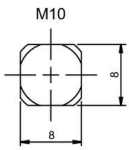
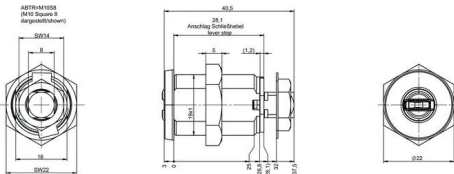
- 1 locking lever cylinder - without locking lever
- 1 housing nut M19 x 1 x 5
- 1 core nut, M7 x 1 (for core output M7V05 and M7S6,) or M10 x 1 (for core output M10S8)

Note

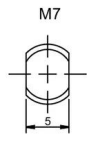
- Please order locking levers and other additional parts separately - Part No. NTS1

Variants that can be ordered

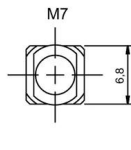
Article number	OF=	V=
NT01	MV	D
	MV	E



ABTR=M10S8



ABTR=M7V05



ABTR=M7S68

