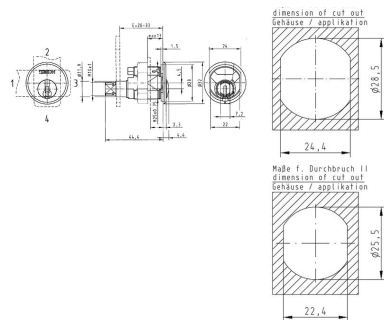


# Universal locking lever cylinder

## .880,AUS=E28- 33

Diameter 28 mm or 25 mm, laterally flattened to 22 mm



### Overview of Advantages

- The locking lever distance can be adjusted in steps of 1 mm from 1-5 mm according to the installation situation. Deformation of the locking lever is not necessary.
- Flexible installation-hole dimension either with diameter 28.5 mm or 25.5 mm
- Single or double key extraction

### Product description

- Brass cylinder
- Number of pin tumblers dependent on system
- Standard finish, matt chrome-plated (OF=MC)
- Further finishes satin nickel plated (MV), or on request
- Blocking wave (SW=), additional lateral scanning and security card depending on profile (PR=)
- Spherical / Tapered cylinder core head with reinforced key guide
- Core pins made of special wear-resistant bronze
- Double key extraction (standard): Locking path 90°, Key rotation 360°
- Single key extraction (optional): Locking path 90°, Key rotation 90° (Ordering specification ZUB2=1695502)
- Fixing with M25 x 0.75 housing nut
- Locking lever SLHB= 164Z009 (further locking levers on request)
- Available for individual lockings and locking systems

### Scope of delivery

- 1 locking lever cylinder
- 2 nickel silver keys
- 1 housing nut M25 x 0,75, SW27
- 1 washer Ø 36 x 25, stainless steel
- 2 core nuts M10 x 0,75, SW17
- 5 shims 1 mm
- 1 catchescrew
- Locking lever lose

### Ordering Information

- Without drilling protection AB=0 as standard or optional with drilling protection 1 (AB=1).
- For single key extraction: Ordering specification ZUB2=1695502 (consisting of: limiting screw, engaging disc, engaging screw).
- For installation-hole dimension 25,5 mm: Ordering specification ZUB1=1650110 (consisting of washer for installation-hole dimension Ø 28 x 24, Ø 32 mm, 2 mm thickness).