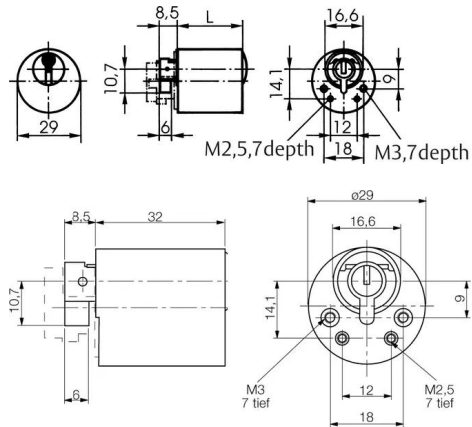


# Furniture cylinder - system P6 P648

With adapter, 29 mm diameter



## Product description

- 6 pin tumblers
- Brass cylinder
- Standard finish, satin nickel-plated (OF=MV)
- Other surfaces: brass, mat brushed (OF=MG), polished brass (OF=MP)
- Dimension L=32 mm
- Drilling protection (AB=), security card depending on profile (PR=)
- Tapered cylinder core head with reinforced key guide
- Core pins made of special wear-resistant bronze
- Key with square metal head
- Available for individual lockings and locking systems

## Scope of delivery

- 1 furniture cylinder
- 2 keys, brass nickel-plated
- 1 escutcheon

## Note

- Former BAB articles P048 and P648 are available as this type with the old article numbers.