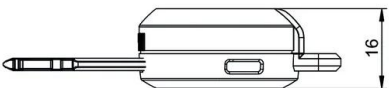
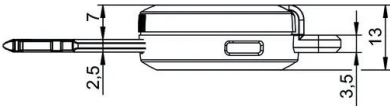
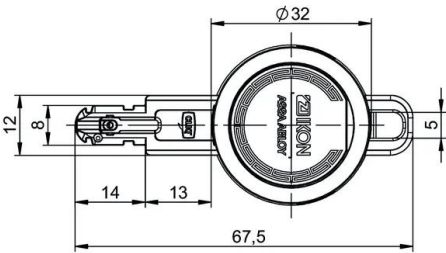


Key eCLIQ N109,V=E3PLUS5000

"Professional" electronic user key



Overview of Advantages

- Ideal in combination with the wall programming devices and the mobile programming device
- Option for direct programming of authorisations without approaching cylinders
- Large memory for up to 5,000 authorizations for cylinders or cylinder groups

Product description

- Electronic key and locking system encryption
- Additionally with time function and event memory for the last 1,000 locking actions
- Key memory capacity 5.000 cylinder / cylinder groups
- Option for direct programming of authorisations without approaching cylinders
- Saves programming procedures
- Ideal in combination with the wall programming devices and the mobile programming device
- LED indicator and acoustic signalling for functional operation and battery status
- The data and power transmission to the cylinder is contact based
- The data transmission to the cylinder is highly encrypted
- Temperature range 0° C to +70° C (ATEX -30° C to +50° C)
- Protected against temporary immersion in water (IP67)
- Power supply via commercially-available lithium battery (CR2450)*
- For 100,000 locking operations (service life of about 10 years)
- The battery can be easily changed by the user without tools
- Standard colour for battery cover: black (RD=SW)
- Other colours for battery cover: blue (RD=BL), yellow (RD=GE), green (RD=GN), grey (RD=GR), red (RD=RT) and orange (RD=OR)
- Optionally available with a RFID transponderchip (AUS=LEGICPRIME, AUS=LEGIC ADVANT, AUS=MIFARE CLASSIC, AUS=MIFARE DESFIRE EV1, AUS=MIFARE DESFIRE EV3, AUS=EM4102, AUS=HITAG 1 or AUS=HITAG 2) integrated in the battery cover
- Optionally available for use in potentially-explosive atmospheres in Zone 1 (ATEX=II 2G Ex ib IIC T4 Gb)*

Scope of delivery

- 1 electronic user key, including battery*

Note

- The key can be adjusted when ordering or later by a colored battery cover or a transponder battery cover (NZ02)
- *The standard eCLIQ battery is not approved for ATEX, only the special battery must be used

Variants that can be ordered

Article number	RD=
N109,V=E3PLUS5000	SW
	BL
	GE
	GN
	GR
	RT
	OR