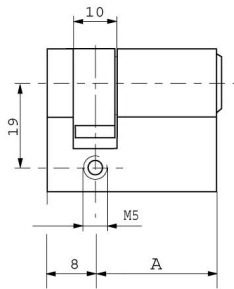


# Profile half cylinder - system P0

## P032,VAR2=2MM



### Product description

- 5 pin tumblers
- Brass cylinder
- Standard finish, satin nickel-plated (OF=MV)
- Other surfaces: brass, mat brushed (OF=MG), polished brass (OF=MP)
- Basic cylinder length A (L=30) - other installation lengths available
- Standard cam position 45° bottom left - 8x45° reversible (SST=8x45)
- Other cam positions (SST=30, 8x30, 90-270, 270-90, 0-90, 180-90)
- Drilling protection (AB=), security card depending on profile (PR=)
- Tapered cylinder core head with reinforced key guide
- Cam made of break and corrosion-resistant sinter metal
- Core pins made of special wear-resistant bronze
- Key with square metal head
- Available for individual lockings and locking systems

### Scope of delivery

- 1 profile half-cylinder
- 3 nickel silver keys
- 1 cylinder fixing screw M5 x 85 mm

### Note

- Former BAB cylinder types .45
- The dimension from the middle of the cylinder fixing screw hole to the rear is 2 mm shorter than the P032, cam radius 15 mm