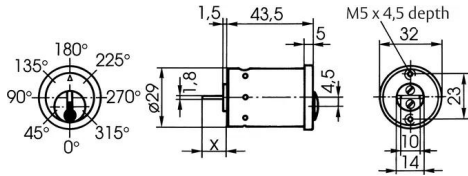


Switch cylinder - system SK6 Z537

29 mm diameter



Product description

- 6 pin tumblers
- Brass cylinder
- Standard finish, matt chrome-plated (OF=MC)
- Blocking wave (SW=), additional lateral scanning and security card depending on profile (PR=)
- Spherical cylinder core head with reinforced key guide
- Core pins made of special wear-resistant bronze
- Up to 8 switching and key withdrawal positions (8x45°) can be achieved by drilling to a diameter of 4.5 mm at the required positions. Length of cam latch (x) 12 mm
- Fixing holes on rear for M5 screws
- Key with square metal head
- Available for individual lockings and locking systems
- Protected key profile with security card

Scope of delivery

- 1 switch cylinder
- 2 nickel silver keys

Note

- Special colours not available