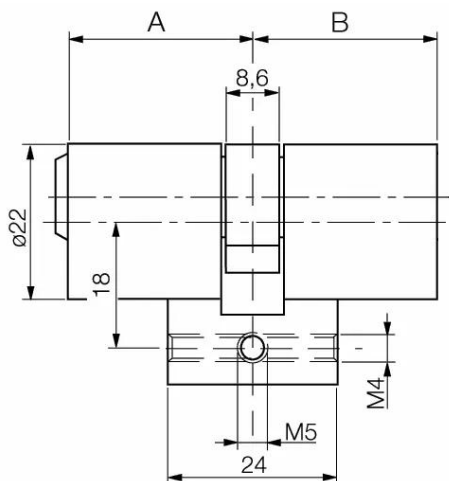


Profile double cylinder Swiss .C51

Closes on one side (A), dummy on other side (B)



Product description

- 5 pin tumblers
- Brass cylinder
- Standard finish, satin nickel-plated (OF=MV)
- 22 mm diameter
- Tapered cylinder core head with reinforced key guide
- Cam consisting of break and corrosion-resistant nickel silver profile or sinter metal, depending on system
- Core pins made of special wear-resistant bronze

Scope of delivery

- 1 profile-double cylinder
- 3 nickel silver keys
- 1 cylinder fixing screw M5 x 85 mm