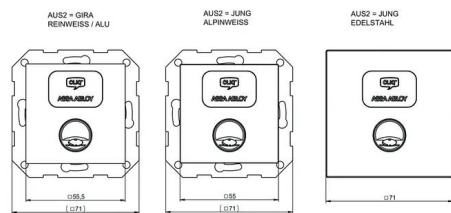
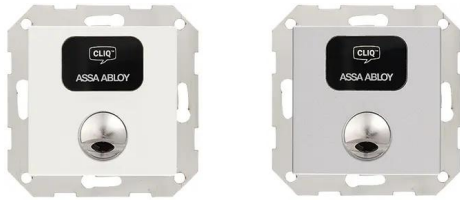


# Indoor Reader VERSO® VL01

Fixed-site station for controlling third-party devices by means of floating contact



## Product description

- Enables the control of third-party devices by activating a floating contact
- External power supply 12 V DC to 24 V DC  $\pm 10\%$ , power consumption 0.1A
- As flush-mounted version without frame
- Dimensions 71 x 71 x 45 mm
- Optional versions of the front panel (AUS2=): GIRA REINWEISS / GIRA ALU / JUNG ALPINWEISS / JUNG EDELSTAHL
- Integrated relay unit (V=FO1) as standard
- Optionally with remote relay unit (V=FO2)
- Triggering of switching adjustable by inserting or removing an authorised key
- Switching capacity 1A at 12 V AC or 24 V DC
- Switching time adjustable approx. 1-10 seconds

## Scope of delivery

- 1 Wall reader
- For V=FO2 with 60 mm junction box for remote relay unit