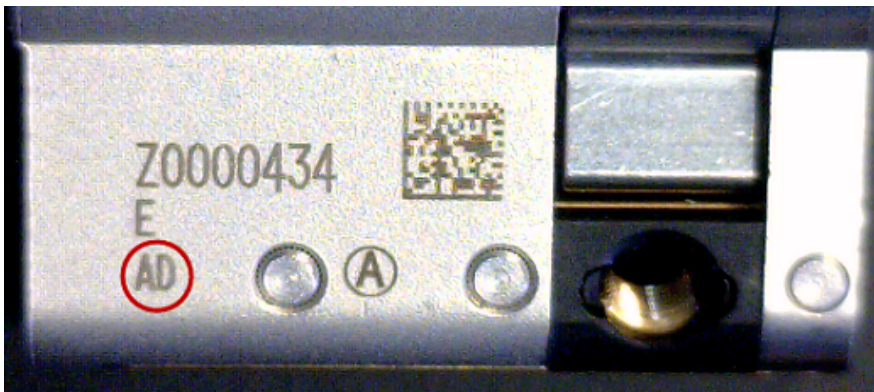




Date of manufacture (CLIQ keys and cylinders)

Our CLIQ cylinders (all systems) are always provided with a date abbreviation consisting of two letters indicating the month and year of manufacture. The first letter stands for the month and the second for the year in which the cylinder was manufactured. You will find the two letters on all cylinders under the marking next to the lock number.



Cylinder was manufactured in January (A) 2017

(D)

For VERSO CLIQ and eCLIQ keys, the date of manufacture is also indicated by a date abbreviation. This is made up of the same letters as for the cylinders..

You will find the date abbreviation on the VERSO CLIQ keys on the back of the shaft, under the marking.



Key was produced in September (I) 2014 (A)

With the eCLIQ keys, you will find the date abbreviation on the front of the shaft, between the system number and the marking.



Key was produced in January (A) 2017 (D)

[Link zum FAQ-Eintrag](#) | Status as of: 02.01.2018 | RedTeam