



Capacity of the programming key is exhausted although less than 100 cylinders have to be programmed.

You are wondering about the capacity display of the programming key, which is almost exhausted although you "only" want to program 60 cylinders?

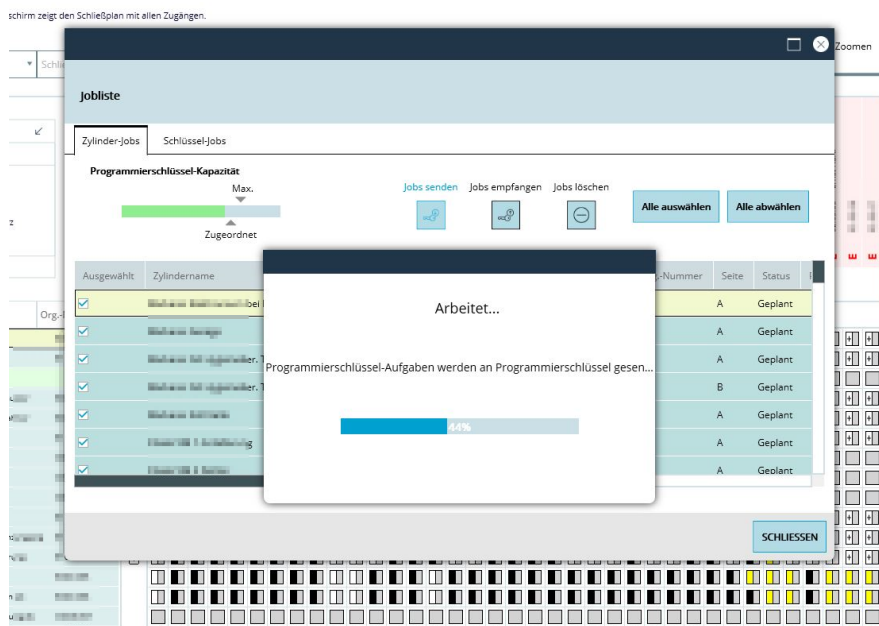
This is because a job for a cylinder can comprise several programming steps, which are then individually reflected in the capacity display.

Here is an actual example:

The sample system contains 62 assignments with a total of 224 tasks.

These tasks contain smaller programming steps. For example, there are some tasks to add a key group authorisation, 17 of these steps remove all electronic keys from list of authorised keys, add groups or read the list sizes of cylinders.

The total number of these "small tasks" or steps is 1349, so the feedback you see is 1349 / 1500.



[Link zum FAQ-Eintrag](#) | Status as of: 28.12.2022 | SNE