

Planet finger protection®

Now also available for glass doors



Protect your children's fingers

 **Planet**
ASSA ABLOY

SWISS MADE

Experience a safer
and more open world

Roller protector FSR 6000 [Quick]

Practical clip-on system | Quick fit | Adjustable

Also available:
Roller protector FSR 7000 [Outdoor]
for external doors/wet areas



Door types

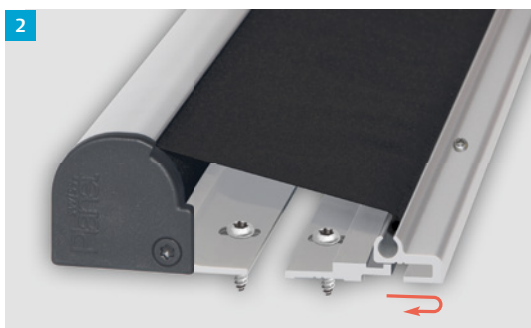


Door material



Key features

- Quick fit roller protector (and removal)
- Hard-wearing synthetic fibre fabric, washable, difficult to ignite B1
- Mountable and removable
- Installed with concealed fixing screws
- Housing position adjustable (elongated holes)
- Suitable for almost all doors
- Certified and supervised quality (MPA)
- 2.000.000 test cycles



Technical data

Standard length	1925 mm (stock length)
Automatic length	2015 mm (stock length)
Maximum supply length	2500 mm
Minimum length	310 mm
Shorten	cannot be shortened
Installation set	universal screws included
Extended length	260 mm or 330 mm

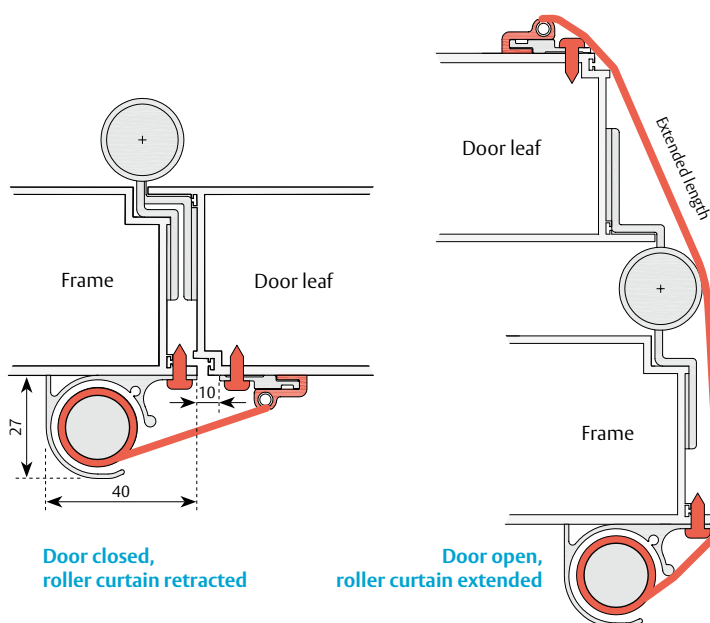
1. Easy clip-on system
2. Side view, concealed screws

Housing colour

	EV1 anodised
	RAL - 9016 white
	RAL - 9007 grey
	RAL - 7016 anthracite
	Stainless steel anodised
	Black C35 anodised NEW
	RAL /ANODISING (option)

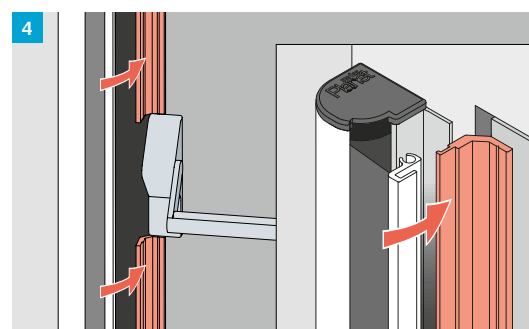
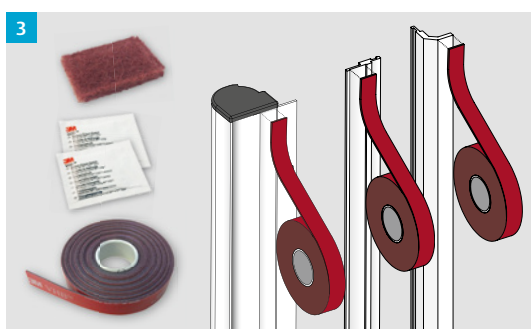
Fabric colour

	Black
	White (option)
	Red (option)
	Blue (option)
	Yellow (option)
	Grey (option)



Practical options

3. Adhesive kit S for steel frames, suitable for FSR 6000/7000 and mounting profiles
4. Mounting profile LP1 (orange coloured) for panic hardware, suitable for FSR 6000/7000. For doors with small available space or no space for attaching the finger protection to the door leaf.



Cover profile FSA 8100 [U-Clip]

For rebated doors | Concealed clip connection



Door types



Door material



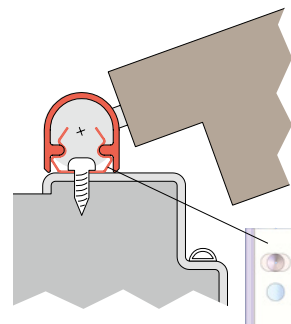
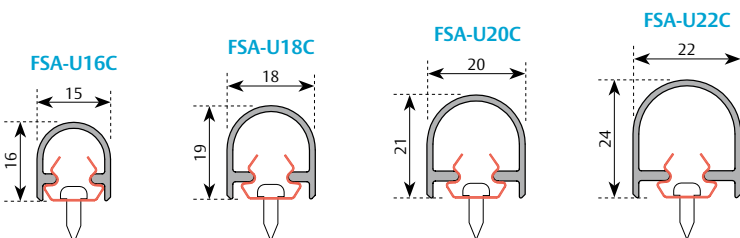
1. Cover profile with Clip
2. Marking aid (option)
3. Adhesive kit U-Clip for steel frames (option)

Key features

- Cover profile for rebated doors
- Quick fit with marking aid
- Concealed clip connection
- Built-in ability to adjust
- Damage-free removal
- Suitable for all hinge diameters

Technical data

Standard length 1	1755 mm, (with 7 clips) for 2 parts, self cut to size (stock length)
Standard length 2	1980 mm, (with 9 clips) for 3 parts, self cut to size (stock length)
Length 3	set per linear metre, cut to size
Shorten	yes
Maximum supply length	2500 mm
Installation set	universal screws and clip included



Housing colour

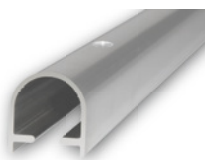
	EV1 anodised
	RAL - 9016 white
	Stainless steel anod.
	Black C35 anod. NEW
	RAL / ANOD. (opt.)

View from below:
Clip with oblong hole for subsequent fine adjustment (± 2 mm)

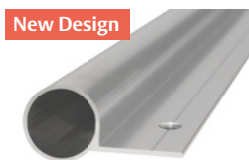
Planet finger protection® cover profiles: closes off the gap at the secondary closing edge on the hinge side.



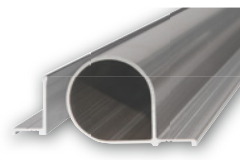
FSA 8100 [U-Clip]
Quick mount with marking aid and clip connection



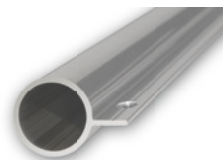
FSA 8200 [U]
for rebated doors.
Quick mount with marking aid



FSA 8300 [D]
for flush doors



FSA 8400 [P]
suitable for all doors with universal hinges



FSA 8500 [O]
for flush doors

Fulfilment of German H&S regulation DGUV No. 102-002, for child daycare centres

This regulation prescribes the safeguarding of shearing points at doors in child daycare centres:
§ 3 | Shearing points at the secondary closing edges of doors must be avoided

Suitable solutions are, for example:

- **Appropriate door constructions**
- **Protective profiles**
- **Roller protectors**

In child daycare centres too, Planet finger protection® is the right choice to safeguard children's hands while fulfilling the statutory requirements at the same time.



Planet finger protection® for glass doors

Simple, elegant and modern - also enables protection function on doors where design is important

All components of the finger protection glass solution are also available in black



Hinge side (left) and non-hinge side



Planet finger protection[®] glass solution

Simple mounting/unhooking system | invisible clip connection | Quick installation | Adjustable



Installation
video



Door types



Door material

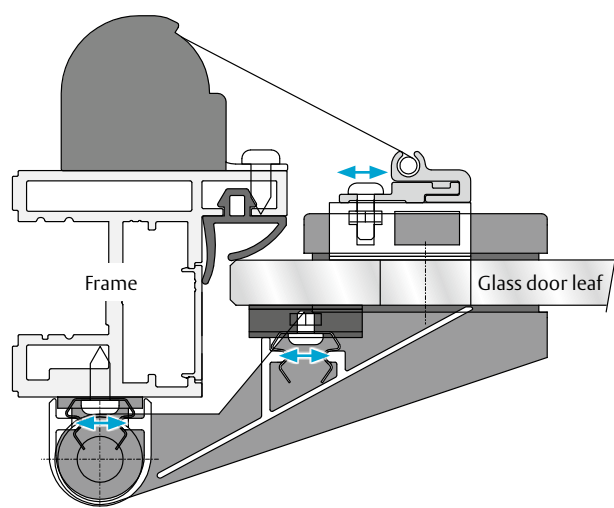


The FSR 6000 [Quick] roller protector is combined with the FSR RG1 base profile on the non-hinge side

On the hinge side, the FSA 8100 [U-Clip] cover profile (type U18-C) is combined with the FSA 8900 cover profile (type AG1)

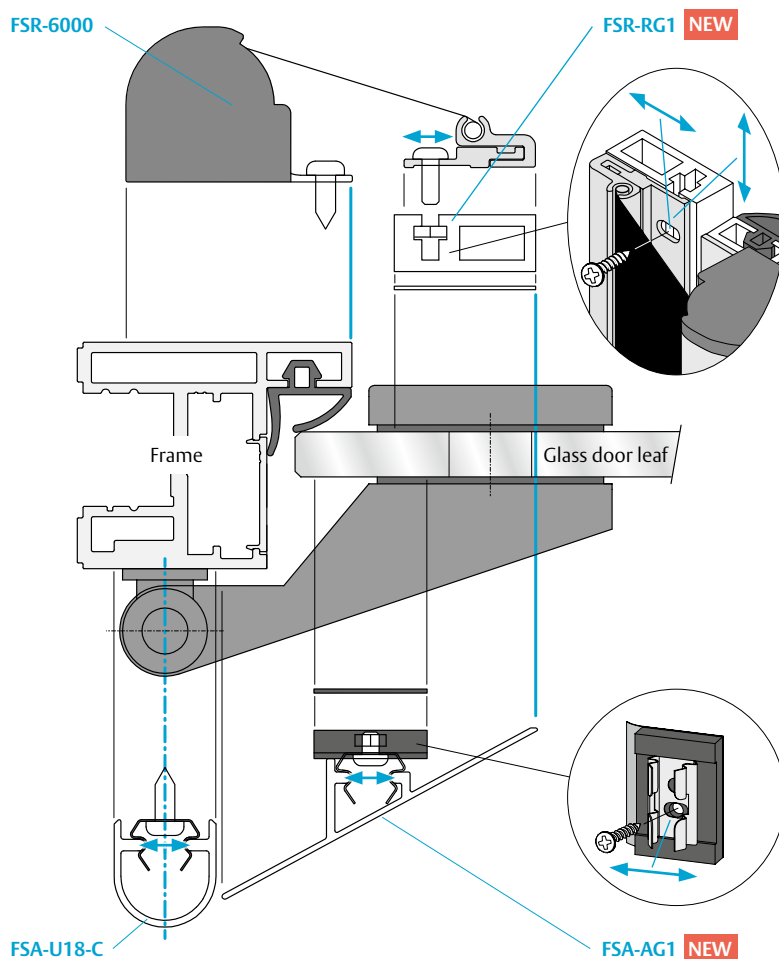
Key features

- Easy quick installation
- Coordinated concept with the two sophisticated FSR-RG1 and FSA-AG1 supplementary profiles
- AG1 cover profile on hinge side with glued, adjustable clip system
- RG1 adapter profile for easy and subsequently adjustable fixing of the roller blind suspension rail
- Items required: FSR-6000, FSR-RG1, FSA-U18-C, FSA-AG1



Housing/profile colour

	EV1 anodised
	RAL - 9016 white
	Stainless steel anod.
	Black C35 satin anod. NEW
	RAL/ANODISING (option)



Technical data FSA-U18-C, FSA-AG1

Standard length	1980 mm
Special length	set per linear metre, cut to size
Shorten	yes
Maximum supply length	2500 mm
Installation set	universal screws and clips included

Technical data FSR-6000 FSR-RG1

Standard length	1925 mm (stock length)	1925 mm (stock length)
Automatic length	2015 mm (stock length)	2015 mm (stock length)
Maximum supply length	2500 mm	2500 mm
Minimum length	310 mm	-
Shorten	cannot be shortened	yes
Installation set	universal screws included	Adhesive kits incl.
Extended length	260 mm or 330 mm	-

The ASSA ABLOY Group is the global leader in access solutions. Every day we help people to feel safer and more secure and to experience a more open world.

ASSA ABLOY
Opening Solutions

Technische Änderungen vorbehalten. 902286DE / 03.2021 / 300

ASSA ABLOY (Schweiz) AG
Drop-down seals & finger protection
Neustadtstrasse 2
CH-8317 Tagelswangen
Phone +41 43 266 22 22
www.planet.ag

