



MEDIATOR®

Technical information

 **effeff**
ASSA ABLOY

Experience a safer
and more open world



About us.

Whatever you want to secure, protect, maintain –
we have technology you require.





Elbe Philharmonic Hall Hamburg



HafenCity University Hamburg



Bauhaus Dessau



City library Stuttgart

ASSA ABLOY Sicherheitstechnik GmbH is your professional partner worldwide in mechanical and electro-mechanical security solutions for safety, security and convenience in buildings.

The company develops, produces and markets high-quality products and multi-purpose systems under the established IKON and effeff brand names for the private, commercial and public sectors.

ASSA ABLOY Sicherheitstechnik is considered a highly competent and reliable partner by its clients. This security company wins through due to its comprehensive know-how, state-of-the-art technology, creative ideas and innovative production processes. Besides comprehensive system solutions for the private and commercial security sectors, ASSA ABLOY Sicherheitstechnik also offers its customers a whole range of services, expert guidance and solution concepts for individual requirements and special applications.

The security expert solutions can be found in many buildings and facilities, ranging from the Olympic Stadium in Berlin through to the Nürnberger Versicherungen Arena up to the Elbe Philharmonic Hall in Hamburg. IKON and effeff products are also used worldwide – from Beijing through Dubai up to London.

We assist you with words and deeds

Hotline Technical advice

+49 7431 123-381

Hotline Sales / Order processing

+49 7431 123-700



The experts at ASSA ABLOY Sicherheitstechnik would be pleased to advise you which electric strike model is most suitable for which installation position.

Technical advice

In terms of technical advice with us, you will be supported by professionals who will continue to help you on every question on technical details. Of course you can also be put into contact with specialists regarding of technical risk assessments or key accounts.

Customer Service Sales / Order processing

With our commercial customer services you can clarify all questions relating to your purchase order, for example the status of the order processing, the delivery date, purchase order changes, but also returns or guarantee issues. Use this simple and quick option to get information or help from our specialists. We will do that with pleasure.

Training

With the ASSA ABLOY Academy, we offer you a free eLearning tool. Learn whenever and wherever you want: www.effeff.de → Section **Service**.

Exhibitions

You will find effeff at many national and international exhibitions. You can obtain the exact dates from our website: www.effeff.de

Our product catalogue online at www.effeff.de

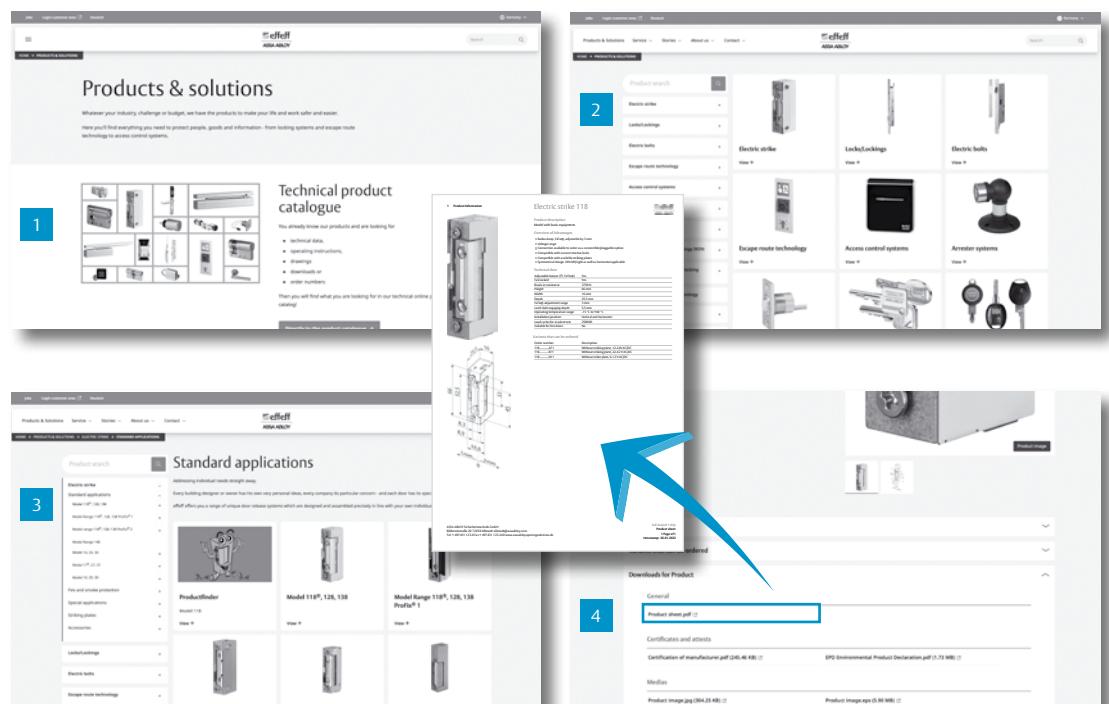
Fast and up-to-date
comprehensive product
information at any time

1
Clearly arranged layout
according to our different
product areas...

2
the submenu will help
you navigate through our
database ...

3
... to find the model you
need.

4
By just clicking on
„Download for Product“,
you can generate a
detailed specification
sheet.



Contents

Where can I find what I need?

About Us	2 – 3
Target Groups	6
The Solution	7
The Benefits	8
The System	9
Tested Security	10
Checklist for the Door Situation	11
Installation Tips	12 – 15
MEDIATOR® Lock, Tubular Frame Version	16 – 17
MEDIATOR® Multi-Point Locking, Tubular Frame Version	18 – 19
MEDIATOR® Lock, Wooden and Steel Door Version	20 – 21
MEDIATOR® Multi-Point Locking, Wooden and Steel Door Version	22 – 23
Linear Electric Strikes	24 – 28
Accessories	29 – 30
Extras	
Door Closers from ASSA ABLOY	31
Locking Cylinders from IKON	32
Order form	33
Overview of the effeff brand range	34 – 35

MEDIATOR®: the ideal lock solution

for apartment buildings and for commercial and public buildings

MEDIATOR® was originally developed as the perfect lock solution for the entry door to apartment buildings, where it provides high intrusion protection, a safe escape route and convenience. Due to the great success in this area, however, increasing numbers of security companies, installation companies and metal and wood processing companies recognise MEDIATOR® as the standard product for numerous door situations with similar requirements.

Therefore, as multifunctional door locking, MEDIATOR® is used in the widest range of branches, institutions and sectors. It can be found wherever a door must reliably lock again after entry: Side entries, personnel entries, doors to server rooms, entrance doors to medical practices and law offices, access to management or personnel departments – the application possibilities for MEDIATOR® are practically unlimited.

The most important advantages in apartment buildings

- High intrusion protection, because the main entrance is always locked.
- Safe escape route, because the building can be left through the main entrance.
- Great convenience, because the locked main entrance can be opened from inside the apartment.

The most important advantages in public and commercial buildings

- MEDIATOR® can be combined with EAD and intrusion alarm systems.
- MEDIATOR® has all important certifications and approvals
- MEDIATOR® can also be used in fire and smoke protection doors in coordination with the door manufacturer.



Certified security: MEDIATOR® has all important certifications and approvals

- VdS approval as lock monitoring means VdS Class C, G 109 032
- VdS approval as mechanical locking means VdS Class A, M 109 314
- VdS Approval as an electromechanical actuator for access control systems VdS Class C, Z 109 001
- Approval in compliance with DIN EN 179, as an emergency exit door lock
- Approval in compliance with DIN EN 1125, as a panic door lock
- Inspection authority test certificate for use in fire and smoke protection doors No. 120003555

The advantages on every door: Always locked automatically

Whether in an apartment building or commercial and public buildings: the most important function for the responsible parties is automatic locking after entry. Therefore, with the use of MEDIATOR® the security aspect always comes first, regardless of the reasons. The same applies for medical practices and law offices, as well as for office buildings with several tenants, jewelry business and archives, for clinics and production

halls or for large projects with several entrances. The function to be performed by MEDIATOR® can be determined specifically for each case. Some application examples MEDIATOR® can be found here.

MEDIATOR® for apartment buildings

The unique and perfect solution for the main entrance which fulfils all requirements with respect to security and user convenience. MEDIATOR® solves conflicts of interest for residents and building management alike and provides peace of mind in the building.



MEDIATOR® law offices

A safe and user-friendly solution for law office employees and clients alike.

Visitors arriving outside of office hours can ring the doorbell and be let in with a release button. The offices can be left at any time and the door is immediately locked again.



MEDIATOR® for the server room

As a VdS-certified locking element, MEDIATOR® in combination with an access control system offers reliable security, determining who may enter this sensitive area and ensuring that the door always locks again afterwards.



MEDIATOR® for production halls

Production halls often have auxiliary, side or rear doors that are used only sporadically or never at all. MEDIATOR® also provides the assurance in this case that the door always remains locked, but the escape route is always free.



The Benefits

Who has what advantages?

As there are so many benefits, everybody gains something

Advantages for security specialists.

- New business area
- Additional skill area for customer guidance
- Creation of new sales potential

Advantages for building management.

- Safety in emergency situations (escape route safe-guarded!)
- Increase in value as a result of greater convenience and greater security
- No complaints from residents

Advantages for private owners of apartment buildings.

- No unnecessary arguments with tenants
- Appreciation in value of property
- Protects against vandalism

Advantages for owners of apartments.

- Secure protection for the whole building
- Ease of use at any time, day or night
- Improved relations between neighbours

For tubular-frame and full-leaf doors:

MEDIATOR® – compatible with most door situations

MEDIATOR® is suitable for both tubular-frame and full-leaf doors. Requirements in the checklist on p.11 and the detail designs in the respective catalogue section are to be taken into consideration.

Advantages for installers

- VdS approval, 3x
- Simple retrofitting

Advantages for residents

- Satisfaction of all security requirements
- Ease of use at any time, day or night
- Permanent unlocking for a specified time frame, e.g. when relocating
- Safe escape routes

Advantages for medical and law practices.

- Entrance door permanently open during consultation hours by using timer switch
- Secure locking outside consultation hours
- No problems with other people in the building

Advantages for architects and planners.

- Improved planning expertise
- Fulfilment of increasing requirements from building contractors

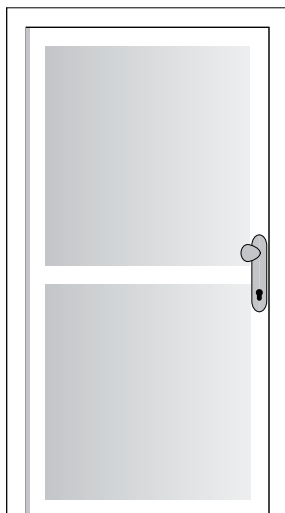
Advantages for facility managers.

- Secure combination with EAC systems
- Reliable locking

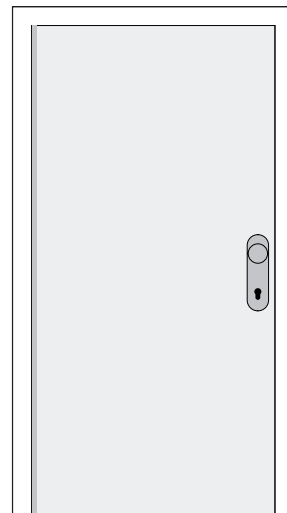
Advantages for every building.

- Any door can be automatically locked again after it is used

Tubular frame door



Full-leaf door



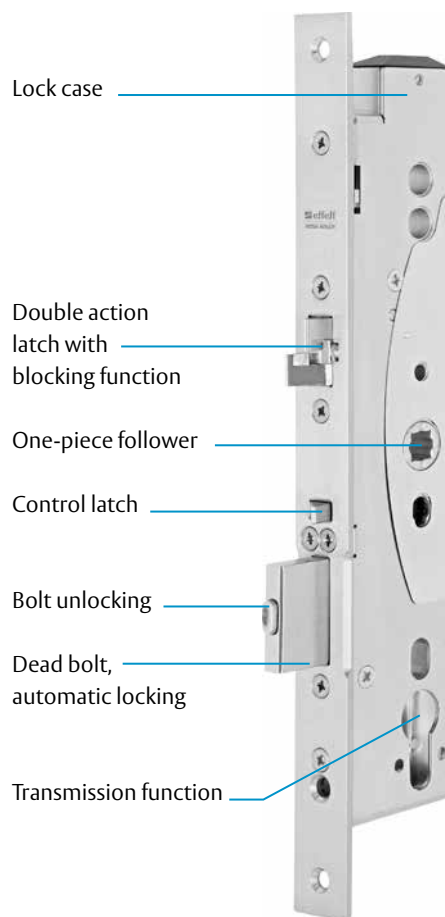
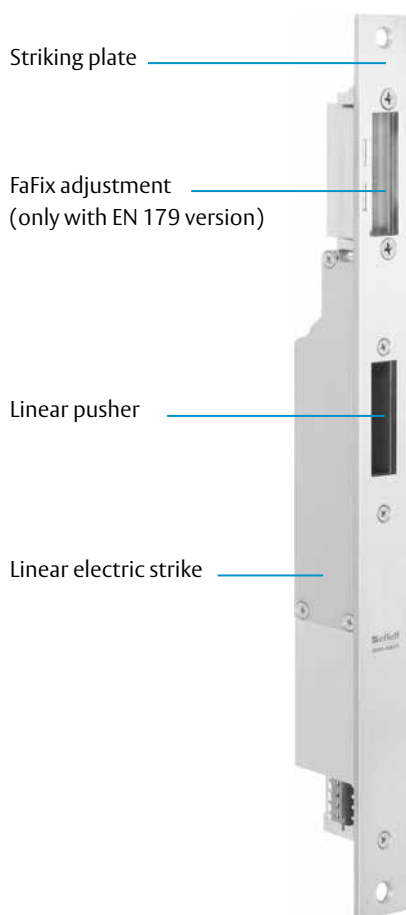
The System

Lock, electric strike, power supply

An ideal combination:

Ingenious ideas and the latest door technology.

The most brilliant of ideas are usually also the simplest ones. MEDIATOR is based on a combination of a self-locking escape door lock with an electric strike. The lock is a specially adapted variant of the proven effeff model 309X in single or multi point version. The MEDIATOR® electric strike is a new development designed especially for this locking solution. Different power supply units are available for surface or flush mounting. Complete system accessories for fast, professional fitting rounds off the MEDIATOR® lock solution.



The two different
construction forms of
MEDIATOR® locks:
The single and multi-point
variants

Compatible accessories,
e.g. mains adapters, can
be found beginning on
page 36



Certified security.

What certifications are there for MEDIATOR®?

Approval for fire and smoke protection doors

The basic requirement for use in fire or smoke protection doors is a general test certificate from inspection authorities.

The test certificate number for MEDIATOR® is 120003555.

The general inspection authority test certificate is required by the door manufacturer for the certification of the door system. Only then is it possible for the door manufacturer to certify (door system certification) and produce a fire or smoke protection door.

The following must be observed for use in fire and smoke protection doors:

- The MEDIATOR® solution may only be installed during production by the door manufacturer and with a corresponding door system certification. Retrofitting in an existing fire or smoke protection door is not permitted, or only after obtaining approval from the door manufacturer.
- The MEDIATOR® electric strike must bear conformity marking (models from 09/2008 and later) and must also use the fire module 519ZBFS. For triggering in the event of a fire, a local fire alarm system or a smoke detector with relay output e.g. model 60060 + 92020---10 must be used (see connection diagram on page 39).
- A permanent unlocking of the MEDIATOR® system is not permitted for this application.

VdS approval

The MEDIATOR® has three different VdS approvals:

- Approval as lock monitoring means (bolt switch contact) VdS Class C, G 109 032
- Approval as a mechanical lock VdS Class A, M 109 314
- Approval as an electromechanical actuator for access control systems VdS Class C, Z 109 001



Approval according to DIN EN 179 and EN 1125

The following applies for the planning of escape doors: Prior to the call for bid, it must be determined whether emergency or panic doors are involved. The legal basis for this is the applicable building code with the corresponding special building regulations.

The decision for emergency or panic doors must be based on EN standards 179 and 1125 with uniform applicability throughout Europe since April of 2003. The two standards differentiate between emergency exit (DIN EN 179) and panic exit (DIN EN 1125) and thereby regulate the corresponding equipment of the door.

DIN EN 179 (emergency exit door lock)
EC Certificate of Conformity 0432 CPD-0001

DIN EN 1125 (panic door lock)
EC Certificate of Conformity 0432 CPD-0017



Checklist for retrofitting.

What must be taken into consideration?

Important, no
order form!

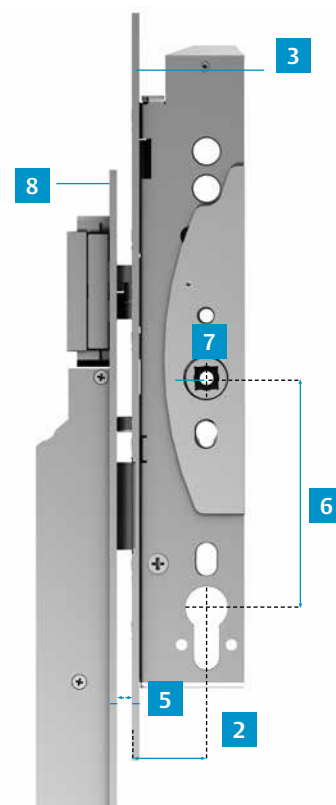
In order to ensure that MEDIATOR functions perfectly:

Survey on the main entrance.

MEDIATOR® is ingenious and therefore very straightforward. Easy to use on a daily basis and just as easy to install. In order for the lock solution to work perfectly as well, a few factors must be taken into consideration before ordering. This pertains to the existing entrance door and its lock and strike. And thus also selection of the required MEDIATOR® components.

The following checklist for door features ensures security for your door.

- 1 DIN handing** ☐ DIN left ☐ DIN right
- 2 Backset**
 Tubular frame version ☐ 30 mm ☐ 35 mm ☐ 40 mm ☐ 45 mm
 Wooden and steel version ☐ 55 mm ☐ 60 mm ☐ 65 mm ☐ ____ mm
- 3 Face plate**
 Width ____ mm
 Thickness ____ mm
 Reworking for lock opening possible ☐ Yes ☐ No
 (with multi-point locking, only 6.5 mm possible, U-shaped face plate)
- 4 Rebate gap**
 Door frame/door leaf gap ____ mm
 For this purpose, please refer to p. 14
- 5 Face plate / striking plate**
 Face plate / striking plate gap ____ mm
- 6 Distance** Euro profile cylinder
 Tubular frame version ☐ 92 mm
 Wooden and steel version ☐ 72 mm
- 7 Follower** ☐ 8 mm ☐ 9 mm ☐ 10 mm
- 8 Striking plate**
 Width ____ mm
 Thickness ____ mm
 Reworking necessary ☐ Yes ☐ No
- 9 Angled striking plate** ☐ Yes ☐ No
- 10 Fitting**
 Compatible with lock series 609 ☐ Yes ☐ No
- 11 Electric Strike**
 Present ☐ Yes ☐ No
 Model _____
 At least four connection wires ☐ Yes ☐ No
 Installation of additional cables possible ☐ Yes ☐ No
 Cable routeing to sub-distribution ☐ Yes ☐ No
 Cable routeing to distribution box ☐ Yes ☐ No
 Space for mains adapter in distribution box ☐ Yes ☐ No
 Other mains adapter installation possible ☐ Yes ☐ No



Please note:

- Off-size in backset/distance, alterations must be made to the door leaf on finishing.
- Space must be provided in the door frame for the motor unit.
- Possibility to align FaFix® striking plate/latch bolt.
- Required gap between face plate & striking plate after fitting: 2 – 4 mm
- Voltage supply must be allowed for.
- Four connection wires are required:
 - Two wires to voltage supply (see table)
 - Two wires to electrical actuation
- With existing connection wires, check the conductor cross-section, diameter and length and compare with the table below. If the cross-section is too small, there is insufficient current supply of the MEDIATOR® electric strike, resulting in a malfunction.

Length of line	Cross-section	Diameter
up to 10 m	0.28 mm ²	0.60 mm
up to 20 m	0.50 mm ²	0.80 mm
up to 30 m	0.75 mm ²	–
up to 40 m	1.00 mm ²	–

Installation – it works like this

Quick, easy and secure fitting But only by professionals

The MEDIATOR® lock solution is a product for customary use in buildings. However, only specialists should fit such solutions. We recommend power supply units be fitted and serviced by a qualified electrician. MEDIATOR® fitters can best obtain the necessary expertise for system installation from specialised training at ASSA ABLOY. This assures MEDIATOR is fitted quickly, easily and securely.



Installation – it works like this

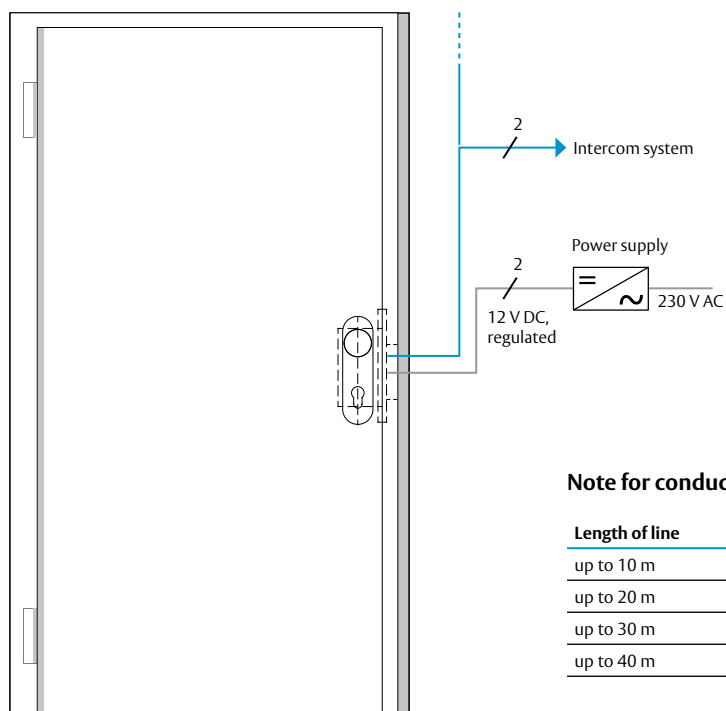
Power source

Four wires are to be provided: two each for the voltage supply and for the control.

IMPORTANT: If a power supply from a different manufacturer is used, make sure that it is a model with 12 V of controlled DC voltage and a current output of at least 1 A.

Technical data

- Control voltage: 5 – 48 V AC or DC
If retrofitting system, the existing door strike circuit can be used.
- Rated operating voltage: 12 V cylinder coin cell

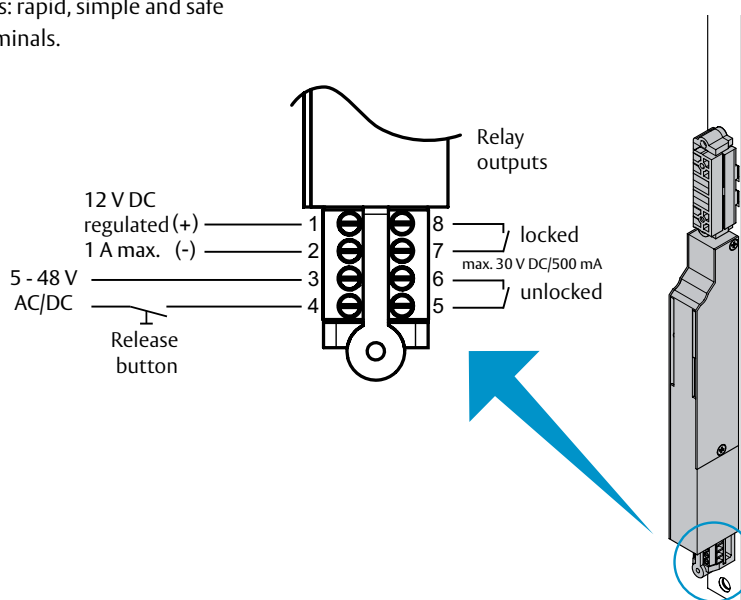


Note for conductor cross-sections:

Length of line	Cross-section	Diameter
up to 10 m	0.28 mm ²	0.60 mm
up to 20 m	0.50 mm ²	0.80 mm
up to 30 m	0.75 mm ²	–
up to 40 m	1.00 mm ²	–

Wiring diagram

Just what the specialist likes: rapid, simple and safe connection with screw terminals.



Tips for experts

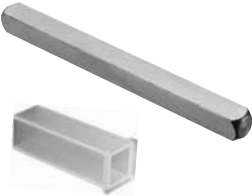
So that it works even in tricky situations.

Fitting MEDIATOR® is no problem for professional security technology specialists. However, special solutions are necessary for special door situations. You will thus find a series of recommendations for fitting if the respective situation arises.

Door Types	Door drilled on one side*	Door drilled on both sides
8 mm handle	With use of full spindle with reducer to 8 mm on the lock side or spindle offset from 9 mm (follower) to 8 mm (handle)*	Normally with use of existing pin, use of reduction from MEDIATOR lock scope of supply
10 mm handle	With use of full spindle offset from 10 mm (handle) to 8 mm (follower); on lock side installation of reduction from MEDIATOR lock scope of supply*	With use of 9 mm full spindle with reinforcement to 10 mm in the handle
Replacement of fittings required	Fitting with a firm pivot-mounted inner handle with 9 mm full pin	For fittings, see p. 20 – 25; 30 – 33
Traction relief required for lock bolt Follower required	Use of full spindle for screwing in the handle or fail-safe spindle with loose connection*	
Tilting relief required for lock bolt Follower required	Drilled on both sides for retrofitting, in which case the spindle bearing is in both the inside and outside escutcheon*	

* As a general rule, we recommend a firm pivot-mounted inner handle with 9 mm full pin.

Full spindle and reducer



Sliding piece

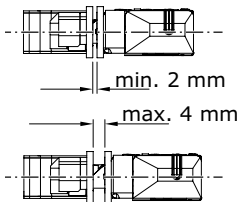
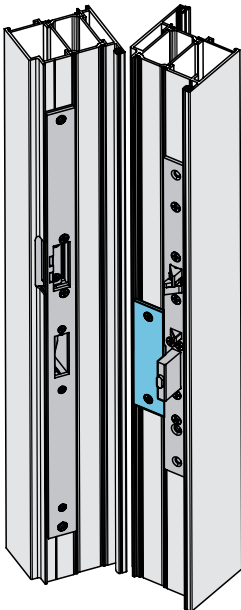
To adjust profile contours (slugs, slots, etc.) insert the polystyrene sliding piece in the leaf to guide the linear slider (see tables on p.17, 19, 25, 27; see page 38 for sliding piece).

Rebate gap

The MEDIATOR® solution requires a gap of 2 to 4 mm between the striking plate and face for secure functioning. A large gap can be reduced by spacer plates on both the strike side (striking plate) and the lock side (only single-point locks, face plate).

Attention: If you use a spacer plate on the lock side, a lock with a larger backset may be required.

Sliding piece



Tips for experts

The most prevalent door profiles and installation recommendations

MEDIATOR® lock Model 609

Profile	Backset Recommended locks	Electric strike striking plate	Sliding piece	Spacer plate Electric strike	Thickness mm	Spacer plate Lock	Comment
Wicona Wicstyle 65 inwards	30, 35, 40, 45, 55	-----31A35-01 -----34A35-01	65.000010	1 x Z65-31A35----01 1 x Z65-34A35----01	3	No	
Schüco Royal S65 inwards	30, 35, 40	-----31A35-01 -----34A35-01	65.000010	1 x Z65-31A35----01 1 x Z65-34A35----01	3	Z09-DBRR03----00	
Heroal 65 inwards	30, 35	-----31A35-01 -----34A35-01	No	1 x Z65-31A35----01 1 x Z65-34A35----01	3	Z09-DBRR03----00	
Alcan 70 inwards	30, 35, 40	-----31A35-01 -----34A35-01	No	1 x Z65-31A35----01 1 x Z65-34A35----01	3	Z09-DBRR03----00	
Ferro Wicstyle 70 inwards	30, 35	-----31A35-01 -----34A35-01	No	1 x Z65-31A35----01 1 x Z65-34A35----01	3	Z09-DBRR03----00	
TKI 602 inwards	30, 35	-----31A35-01 -----34A35-01	No	No		Z09-DBRR03----00	Recess in centre seal necessary
Hueck 1.0 inwards	30, 35	-----31A35-01 -----34A35-01	65.000010	1 x Z65-31A35----01 1 x Z65-34A35----01	3	No	
Wood profiles	60, 65, 80, 100	-----32A35-04 -----32A35-05 -----33A35-04 -----33A35-05	No	No		Z09-DBVB03----00	Angled striking plates with radius, fitted into the door

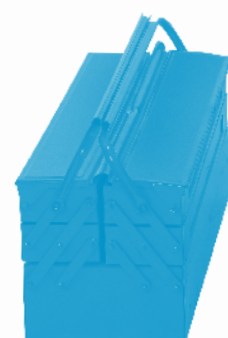
MEDIATOR® multi-point locking Model 629

Profile	Backset Recommended locks	Electric strike striking plate	Sliding piece	Spacer plate Electric strike	Thickness mm	Spacer plate Lock	Comment
Wicona Wicstyle 65 inwards	30, 35, 40, 45, 55	-----31A35-01 -----34A35-01	65.000010	No	0	No	
Schüco Royal S65 inwards	30, 35, 40	-----31A35-01 -----34A35-01	65.000010	1 x Z65-31A35----01 1 x Z65-34A35----01	3	No	
Schüco Royal S65 outwards	30, 35, 40	-----31A35-01 -----34A35-01	65.000010	1 x Z65-31A35----01 1 x Z65-34A35----01	3	No	
Heroal 65 inwards	30, 35	-----31A35-01 -----34A35-01	No	2 x Z65-31B35----01 2 x Z65-34B35----01	4	No	
Alcan 70 inwards	30, 35, 40	-----31A35-01 -----34A35-01	No	2 x Z65-31B35----01 2 x Z65-34B35----01	4	No	
Ferro Wicstyle 70 inwards	30, 35	-----31A35-01 -----34A35-01	No	1 x Z65-31A35----01 1 x Z65-31B35----01 1 x Z65-34A35----01 1 x Z65-34B35----01	5 5	2 x Z65-49B35----01 *	* Gap for hook locking plate 3mm
Hueck 1.0 inwards	30, 35	-----31A35-01 -----34A35-01	65.000010	No	0	No	

Recommended Tools

The following tools make installation easier:

- Oscillation saw
- Wedge to hold open door
- Files
- Magnetic grip, if required
- Riveting nut gripper and appropriate tool, if required (for tubular frame doors)



MEDIATOR® lock

Tubular frame version



MEDIATOR lock, tubular frame version

The MEDIATOR® lock in its tubular frame version is available with different backsets and a comprehensive range of accessories.

Features:

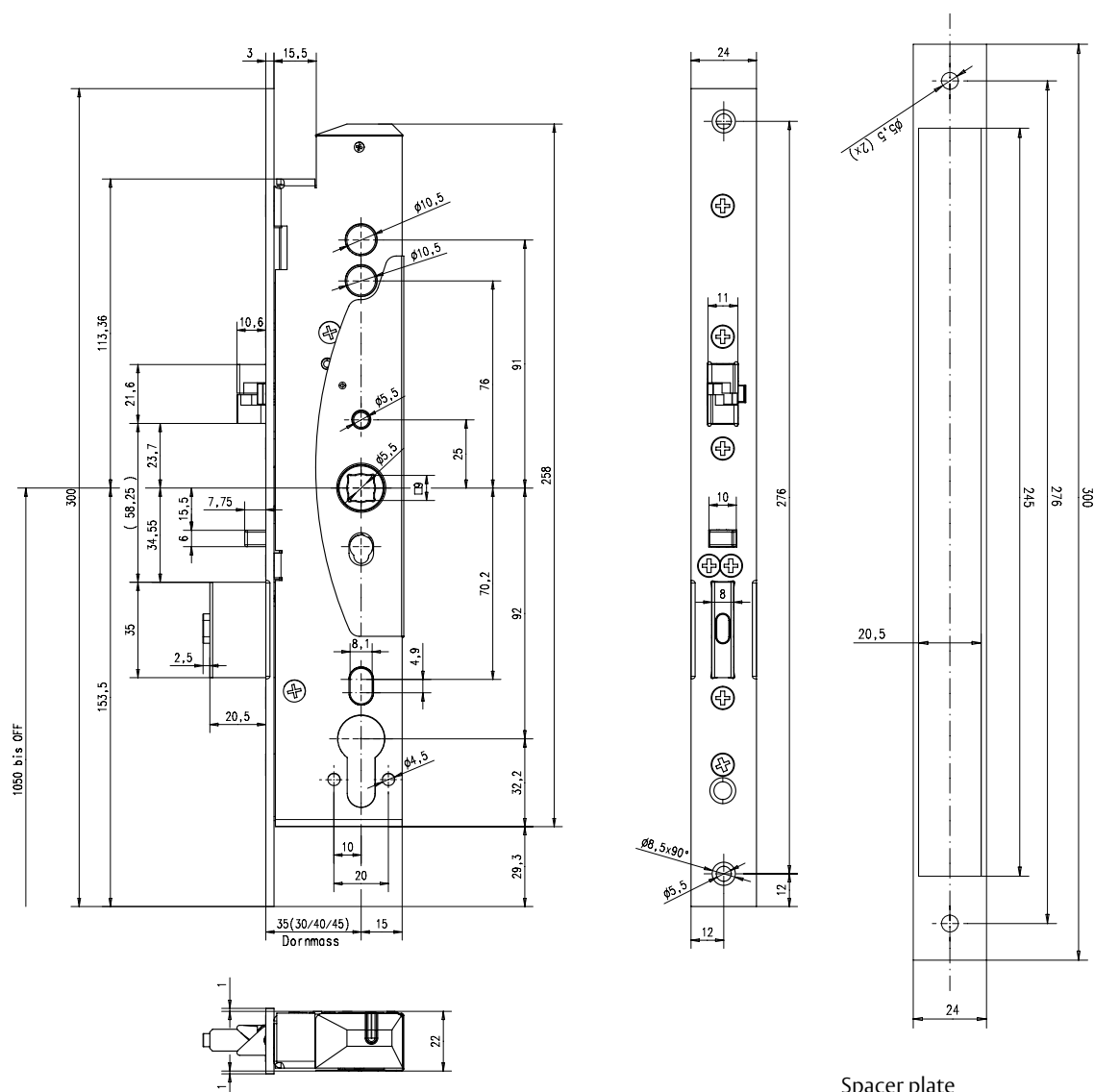
- Self-locking system: Dead bolt and latch are blocked;
 Advantage: higher security
- Mechanical process control between cross and control latch
- Integrated panic function on the inside handle
- Changeover function for unlocking with a key from the outside
- Minimum rear backset for tubular frame design: 15 mm

MEDIATOR® locks have a bolt through the handle and thus require front door furniture (inside handle or panic push bar, outside knob or push bar).

Fittings and accessories: Fittings p. 20 – 23

Technical data	
Backset Tubular frame version	30, 35, 40, 45 mm
Distance Tubular frame version	Euro profile cylinder: 92 mm
Bolt throw	20 mm
Handle follower	9 mm (included in supply: reducer to 8 mm)
Approval DIN EN 179	EC Certificate of Conformity 0432 CPD-001
Approval DIN EN 1125	EC Certificate of Conformity 0432 CPD-017
VdS approval	G 109 032, M 109314, Z 109001
Building authorities test certificate	P-120003555
Mech. strength (EN 12209:2004)	200,000 cycles, 50 N load on latch, Class 6 protection

MEDIATOR® lock
Tubular frame version



Spacer plate

Ordering information for MEDIATOR lock, tubular frame version

Item description	DIN	Backset, mm	Order code
MEDIATOR lock; face plate width 24 mm angled; distance 92 mm; Europrofile cylinder	1 (universal)	30	609-102PZ-----1
MEDIATOR lock; face plate width 24 mm angled; distance 92 mm; Europrofile cylinder	1 (universal)	35	609-202PZ-----1
MEDIATOR lock; face plate width 24 mm angled; distance 92 mm; Europrofile cylinder	1 (universal)	40	609-302PZ-----1
MEDIATOR lock; face plate width 24 mm angled; distance 92 mm; Europrofile cylinder	1 (universal)	45	609-402PZ-----1
Accessories			
Spacer plate; 300 mm x 24 mm x 3 mm			Z09-DBRR3-----00
Spacer plate; 300 mm x 24 mm x 5 mm (without fig.)			Z09-DBRR5-----00
Slider piece; 100 mm x 30 mm x 3 mm (see p. 14)			6 5 . 0 0 0 0 1 0

Wooden and steel doors version

**MEDIATOR lock, wooden and steel door version**

The MEDIATOR lock in its wooden and steel door version is available with different backsets and a comprehensive range of accessories.

Features:

- Self-locking system: Dead bolt and latch are blocked;
Advantage: higher security
- Mechanical process control between cross and control latch
- Integrated panic function on the inside handle
- Changeover function for unlocking with a key from the outside

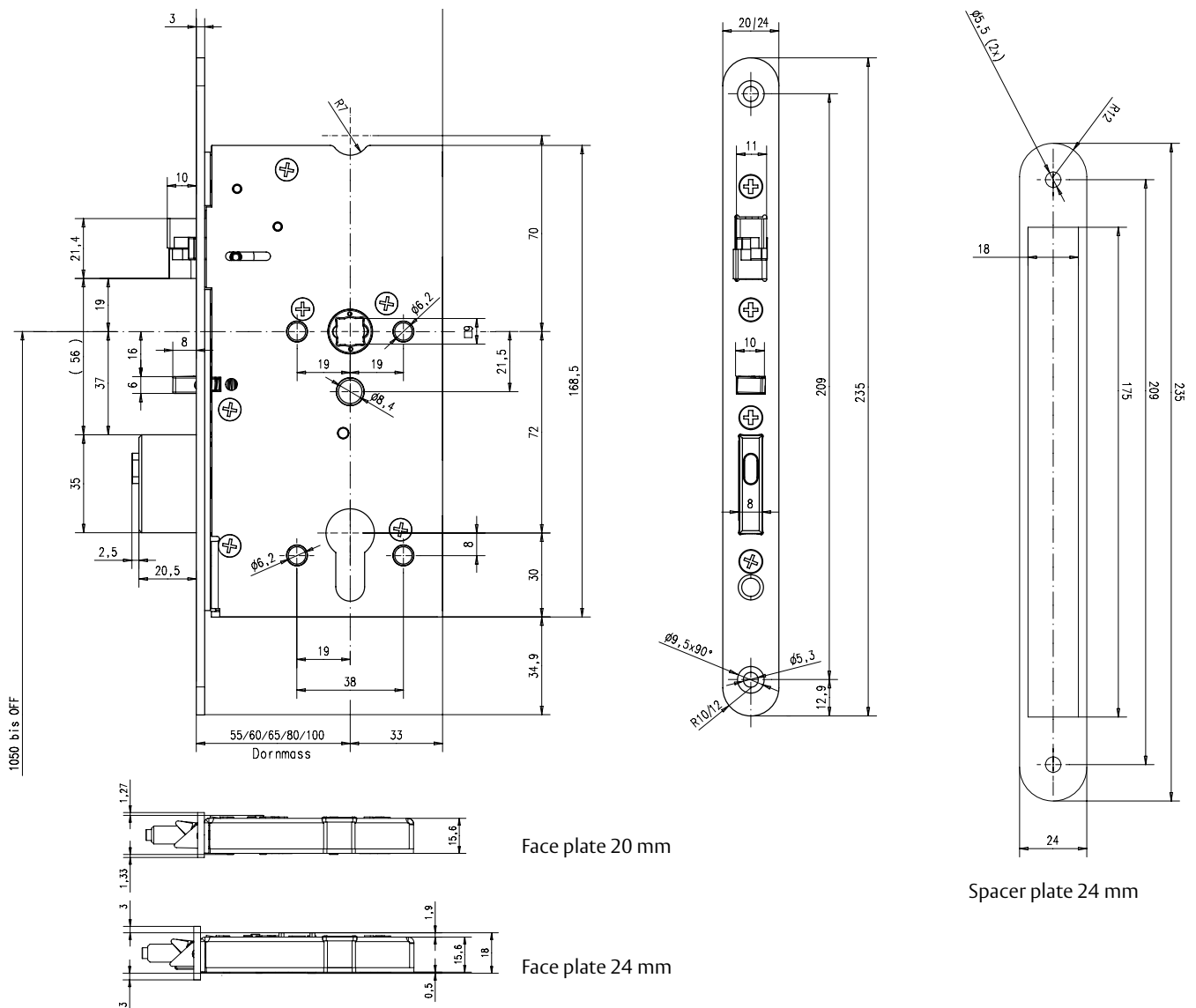
MEDIATOR locks have a bolt through the handle and thus require front door furniture (inside handle or panic push bar, outside knob or push bar).

Fittings and accessories:

Fittings p. 28 – 31

Technical data	
Backset Wooden and steel doors version	55, 60, 65, 80, 100 mm
Distance Wooden and steel doors version	Euro profile cylinder: 72 mm
Face plate widths	20 mm / 24 mm
Bolt throw	20 mm
Handle follower	9 mm (included in supply: reducer to 8 mm)
Approval DIN EN 179	EC Certificate of Conformity 0432-CPD-001
Approval DIN EN 1125	EC Certificate of Conformity 0432-CPD-017
VdS approval	G 109 032, M 109314, Z 109001, P-120003555
Building authorities test certificate	P-120003555
Mech. strength (EN 12209:2004)	200,000 cycles, 50 N load on latch, Class 6 protection

Wooden and steel door version, 20 mm face plate /
24 mm face plate



Ordering information for MEDIATOR lock, wooden and steel door version, 20 mm face plate

Item description	DIN	Backset, mm	Order code
MEDIATOR lock; face plate width 20 mm angled; distance 72 mm; Europrofile cylinder	1 (universal)	55	6 0 9 - 5 0 1 P Z - - - - 1
MEDIATOR lock; face plate width 20 mm angled; distance 72 mm; Europrofile cylinder	1 (universal)	60	6 0 9 - 6 0 1 P Z - - - - 1
MEDIATOR lock; face plate width 20 mm angled; distance 72 mm; Europrofile cylinder	1 (universal)	65	6 0 9 - 7 0 1 P Z - - - - 1
MEDIATOR lock; face plate width 20 mm angled; distance 72 mm; Europrofile cylinder	1 (universal)	80	6 0 9 - 8 0 1 P Z - - - - 1
MEDIATOR lock; face plate width 20 mm angled; distance 72 mm; Europrofile cylinder	1 (universal)	100	6 0 9 - 9 0 1 P Z - - - - 1

Accessories

Slider piece; 100 mm x 30 mm x 3 mm (see p. 14)

Ordering information for MEDIATOR lock, wooden and steel door version, 24 mm face plate

Item description	DIN	Backset, mm	Order code
MEDIATOR lock; face plate width 24 mm angled; distance 72 mm; Europrofile cylinder	1 (universal)	55	6 0 9 - 5 0 2 P Z - - - - 1
MEDIATOR lock; face plate width 24 mm angled; distance 72 mm; Europrofile cylinder	1 (universal)	60	6 0 9 - 6 0 2 P Z - - - - 1
MEDIATOR lock; face plate width 24 mm angled; distance 72 mm; Europrofile cylinder	1 (universal)	65	6 0 9 - 7 0 2 P Z - - - - 1
MEDIATOR lock; face plate width 24 mm angled; distance 72 mm; Europrofile cylinder	1 (universal)	80	6 0 9 - 8 0 2 P Z - - - - 1
MEDIATOR lock; face plate width 24 mm angled; distance 72 mm; Europrofile cylinder	1 (universal)	100	6 0 9 - 9 0 2 P Z - - - - 1

Accessories

Spacer plate; 235 mm x 24 mm x 3 mm	Z 0 9 - D B V B 3 - - - - 0 0
Slider piece; 100 mm x 30 mm x 3 mm (see p. 14)	6 5 . 0 0 0 0 1 0

MEDIATOR® multi-point locking

Wooden and steel doors version



MEDIATOR multi-point lock, wooden and steel door version

The MEDIATOR multi-point lock is available with different backsets in its wooden and steel door version.

Features:

- Self-locking system: Dead bolt and latch are blocked;
Advantage: higher security
- Additional sturdy hooked bolts for improved burglary protection. The hooked bolts are not designed to apply pressure to door seals. The system will only work effectively if there is no side pressure on the bolt.
- Mechanical process control between cross and control latch
- Integrated panic function on the inside handle
- Changeover function for unlocking with a key from the outside
- Minimum rear backset for tubular frame design: 15 mm

MEDIATOR locks have a bolt through the handle and thus require front door furniture (inside handle or panic push bar, outside knob or push bar).

Fittings and accessories: Fittings p. 28 – 31

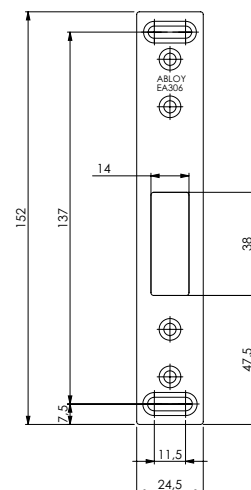
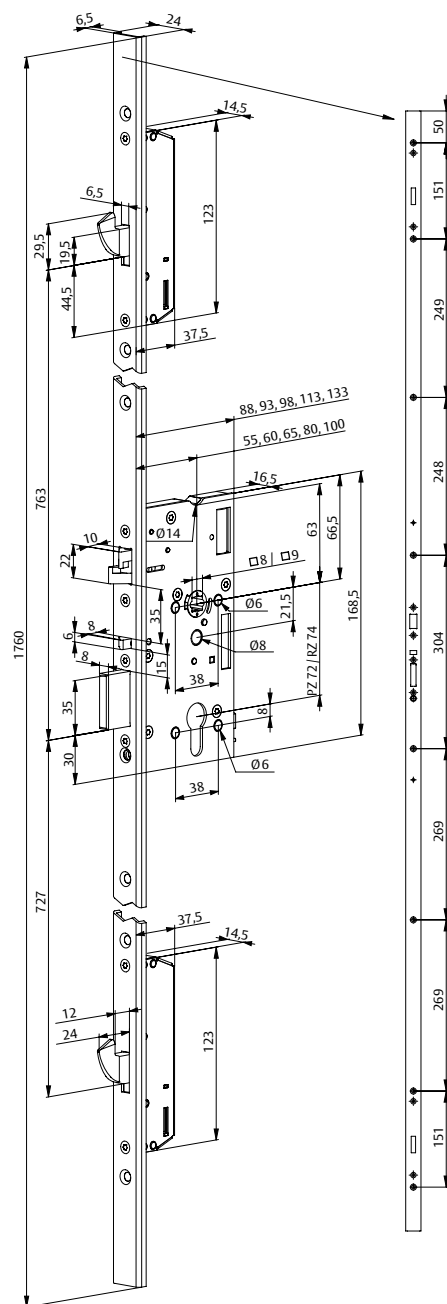
Technical data	
Backset Wooden and steel doors version	55, 60, 65, 80, 100 mm
Distance Wooden and steel doors version	Euro profile cylinder: 72 mm
Bolt throw	20 mm
Handle follower	9 mm (included in supply: reducer to 8 mm)
U-shaped face plate	24 x 6.5 x 1760 mm
Approval DIN EN 179	EC Certificate of Conformity 0432 CPD-001
Approval DIN EN 1125	EC Certificate of Conformity 0432 CPD-017
Building authorities test certificate	P-120003555
Mech. strength (EN 12209:2004)	200,000 cycles, 50N load on latch, Class 6 protection



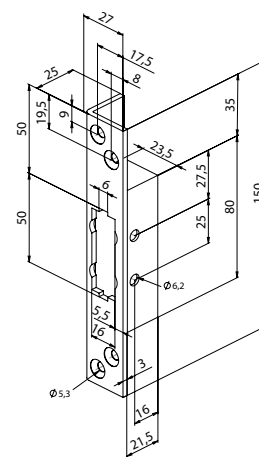
Note:
Take U-rail into account when planning and installing.

MEDIATOR® multi-point locking

Wooden and steel doors version



Flat striking plate



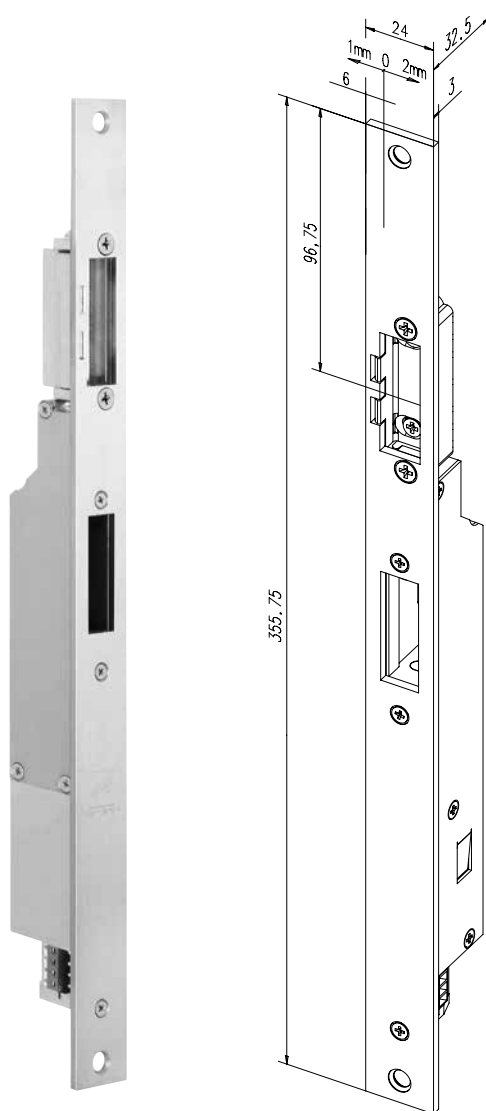
Angled striking plate

Ordering information for MEDIATOR lock, multi-point locking, tubular frame version

Item description	DIN	Backset, mm	Order code
MEDIATOR multi-point lock; U-shaped face plate 24 x 6.5 mm; Distance 72 mm; Europrofile cyl.	1 (universal)	55	629X500PZ-----1
MEDIATOR multi-point lock; U-shaped face plate 24 x 6.5 mm; Distance 72 mm; Europrofile cyl.	1 (universal)	60	629X600PZ-----1
MEDIATOR multi-point lock; U-shaped face plate 24 x 6.5 mm; Distance 72 mm; Europrofile cyl.	1 (universal)	65	629X700PZ-----1
MEDIATOR multi-point lock; U-shaped face plate 24 x 6.5 mm; Distance 72 mm; Europrofile cyl.	1 (universal)	80	629X800PZ-----1
MEDIATOR multi-point lock; U-shaped face plate 24 x 6.5 mm; Distance 72 mm; Europrofile cyl.	1 (universal)	100	629X900PZ-----1
Accessories			
Flat striking plate for hooked bolts; 24.5 x 152 mm			Z29-SBL-1-----1
Spacer plate for multi-point lock motorized power cam bolt			Z65-49B35----01
Angled striking plate for hooked bolts; 25 x 27 x 150 mm			Z29-SBL-3-----1
Slider piece; 100 mm x 30 mm x 3 mm (see p. 14)			6 5 . 0 0 0 1 0

MEDIATOR® electric strike

for locks and multi-point locking



The MEDIATOR linear electric strike for locks and multi-point locking

The MEDIATOR linear electric strike has been especially developed for this lock solution. Manufactured to effeff's established high quality standards, it is available with fix adjustment and flat, angled, arc, or renovation striking plates. Different spacer plates to align the rebate clearance are available with the striking plate used. A sliding piece is available to bridge notches and unevenness in the profile.

The MEDIATOR linear electric strike is motor-driven and fulfils all the requirements for use in busy apartment doors.

Note:

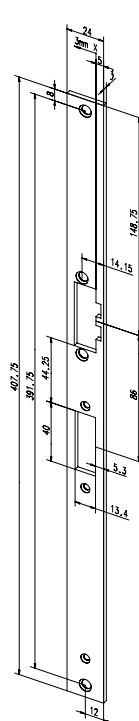
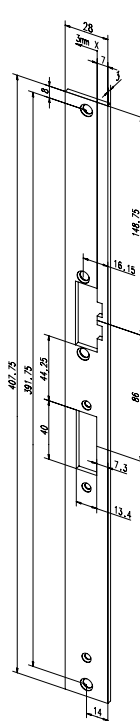
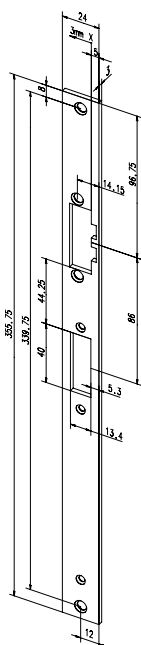
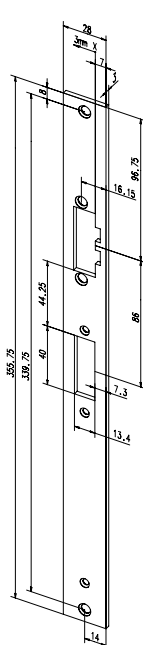
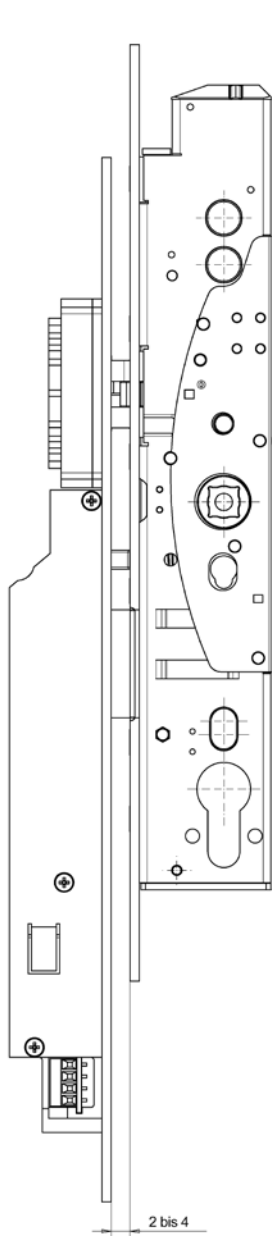
A different variant of MEDIATOR electric strike is required for multi-point locking (Model 65M...). The unlocking time until completely unlocked is 1.3 seconds. The dimensions of Model 65M... correspond to those of Model 65...

accessories:

- Spacer plate, see p. 38
- Mains adapters, see p. 36
- Sliding piece, see p. 37

Technical data		
Rated operating voltage	12 V DC (controlled DC voltage)	
Control voltage (release)	5 V to 48 V AC/DC	
Rated current consumption	500 mA	
Possible Bolt throw	20 mm	
Time until complete unlocking / locking	Model 65...	approx. 0.8 Sec.
	Model 65M...	approx. 1.3 Sec.
Period of time system unlocked	3 s	
Resistance to forced entry	6,000 N	
Operating temperature	- 20 °C to + 60 °C	
Spacing between faceplate and striking plate	min. 2 mm to max. 4 mm	
Monitoring contact door locked/closed	Max. 30 V DC, 500 mA	
Monitoring contact door unlocked/accessible	Max. 30 V DC, 500 mA	
Dimensions without striking plate	206 mm x 20 mm x 29,5 mm (L x W x H)	
Fix adjustment	Yes	
Fix adjustment range	3 mm	
Preload	Max. 80 N	
Permanent release	Yes	
Approval DIN EN 179	EC Certificate of Conformity 0432 CPD-001	
Approval DIN EN 1125 (without Fix adjustment)	EC Certificate of Conformity 0432 CPD-017	
VdS approval as lock monitoring means	Class C, G 109 032	
VdS approval as an electromechanical actuator	Class C, G 109 001	
VdS approval as a mechanical locking means	Class A, M 109 314	

Ordering information for version DIN EN 179



Flat striking plates

Renovation flat striking plate

Ordering information for MEDIATOR electric strike with striking plate for single-point locks according to DIN EN 179

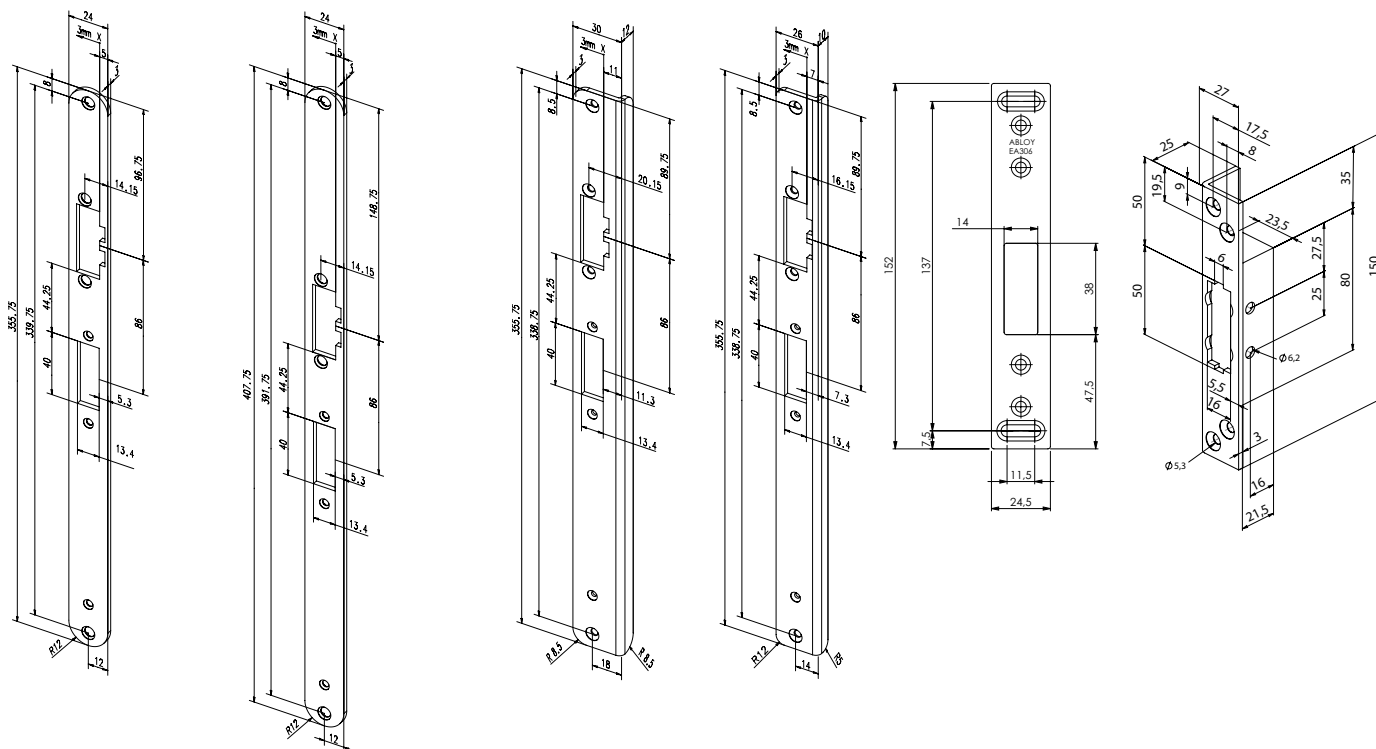
Item description	Compatible Spacer plate	Thickness mm	Order code
MEDIATOR electric strike with flat striking plate DIN EN 179; 355, 75 mm x 28 mm x 3 mm	Z65-30A35----01 Z65-30B35----01	3 2	65-----30A35E91
MEDIATOR electric strike with flat striking plate DIN EN 179; 355.75 mm x 24 mm x 3 mm	Z65-31A35----01 Z65-31B35----01	3 2	65-----31A35E91
MEDIATOR electric strike with renovation flat striking plate DIN EN 179; 407.75 mm x 28 mm x 3 mm	Z65-36A35----01 Z65-36B35----01	3 2	65-----36A35E91
MEDIATOR electric strike with renovation flat striking plate DIN EN 179; 407.75 mm x 24 mm x 3 mm	Z65-34A35----01 Z65-34B35----01	3 2	65-----34A35E91

Ordering information for MEDIATOR electric strike with striking plate for multi-point locks according to DIN EN 179

Item description	Compatible Spacer plate	Thickness mm	Order code
MEDIATOR electric strike with flat striking plate for multi-point locks according to DIN EN 179; 355, 75 mm x 28 mm x 3 mm	Z65-30A35----01 Z65-30B35----01	3 2	65M----30A35E91
MEDIATOR electric strike with flat striking plate for multi-point locks according to DIN EN 179; 355.75 mm x 24 mm x 3 mm	Z65-31A35----01 Z65-31B35----01	3 2	65M----31A35E91
MEDIATOR electric strike with renovation flat striking plate for multi-point locking; according to DIN EN 179; 407.75 mm x 28 mm x 3 mm	Z65-36A35----01 Z65-36B35----01	3 2	65M----36A35E91
MEDIATOR electric strike with renovation flat striking plate for multi-point locking; according to DIN EN 179; 407.75 mm x 24 mm x 3 mm	Z65-34A35----01 Z65-34B35----01	3 2	65M----34A35E91

More striking plate variants on request

Ordering information for version DIN EN 179



Arc striking plate and
renovation arc striking plate

Striking plates for hooked bolt

Ordering information for MEDIATOR electric strike with striking plate for single-point locks according to DIN EN 179

Item description	Compatible Spacer plate	Thickness mm	Order code
MEDIATOR electric strike with arc striking plate DIN EN 179; 355.75 mm x 24 mm x 3 mm	Z65-60A35----01 Z65-60B35----01	3 2	6 5 - - - - 6 0 A 3 5 E 9 1
MEDIATOR electric strike with renovation arc striking plate DIN EN 179; 407.75 mm x 24 mm x 3 mm	Z65-61A35----01 Z65-61B35----01	3 2	6 5 - - - - 6 1 A 3 5 E 9 1
MEDIATOR electric strike with angled striking plate according to DIN EN 179; left-hand (4), right-hand (5) 355.75 mm x 12 mm x 3 mm	---		6 5 - - - - 3 2 A 3 5 E 9 4 / 5
MEDIATOR electric strike with angled striking plate according to DIN EN 179; left-hand (4), right-hand (5) 355.75 mm x 12 mm x 3 mm	---		6 5 - - - - 3 3 A 3 5 E 9 4 / 5

Ordering information for MEDIATOR electric strike with striking plate for multi-point locks according to DIN EN 179

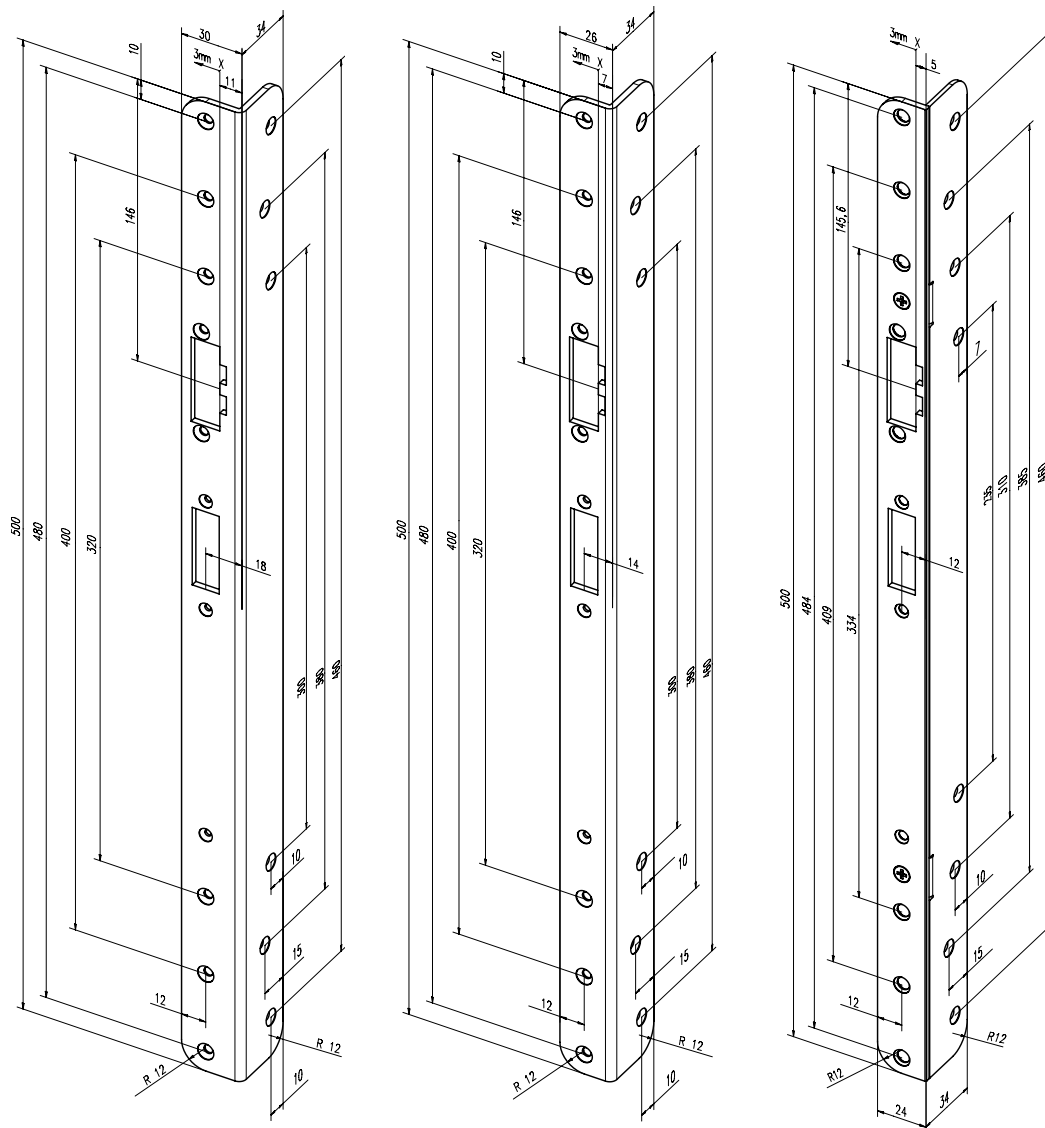
Item description	Compatible Spacer plate	Thickness mm	Order code
MEDIATOR electric strike with arc striking plate DIN EN 179; 355.75 mm x 24 mm x 3 mm	Z65-60A35----01 Z65-60B35----01	3 2	6 5 M - - - - 6 0 A 3 5 E 9 1
MEDIATOR electric strike with renovation arc striking plate DIN EN 179; 407.75 mm x 24 mm x 3 mm	Z65-61A35----01 Z65-61B35----01	3 2	6 5 M - - - - 6 1 A 3 5 E 9 1
MEDIATOR electric strike with angled striking plate according to DIN EN 179; left-hand (4), right-hand (5) 355.75 mm x 30/12 mm x 3 mm	---		6 5 M - - - - 3 2 A 3 5 E 9 4 / 5
MEDIATOR electric strike with angled striking plate according to DIN EN 179; left-hand (4), right-hand (5) 355.75 mm x 26/12 mm x 3 mm	---		6 5 M - - - - 3 3 A 3 5 E 9 4 / 5

More striking plate variants on request

Ordering information for striking plates for multi-point locks

Item description	Compatible Spacer plate	Order code
Flat striking plate for hooked bolts; 152 mm x 24,5 mm x 3 mm	Z65-49B35----01	Z 2 9 - S B L - 1 - - - - 1
Angled striking plate for hooked bolts; 25 x 27 x 150 mm	–	Z 2 9 - S B L - 3 - - - - 1

Ordering information for version DIN EN 179



Renovation angled striking plate

The striking plate
65-----68A35E94/5
can be fit as DIN right
hand/DIN left hand.

Ordering information for MEDIATOR electric strike with striking plate for single-point locks, DIN EN 179

Item description	Compatible spacer plate	Order code
MEDIATOR electric strike with renovation angled striking, left-hand (4), right-hand (5) 500 mm x 30/34 mm x 3 mm	---	6 5 - - - - 6 4 A 3 5 E 9 4 / 5
MEDIATOR electric strike with renovation angled striking, left-hand (4), right-hand (5) 500 mm x 26/34 mm x 3 mm	---	6 5 - - - - 6 7 A 3 5 E 9 4 / 5
MEDIATOR electric strike with renovation angled striking, left-hand (4), right-hand (5) 500 mm x 24/34 mm x 3 mm	---	6 5 - - - - 6 8 A 3 5 E 9 4 / 5

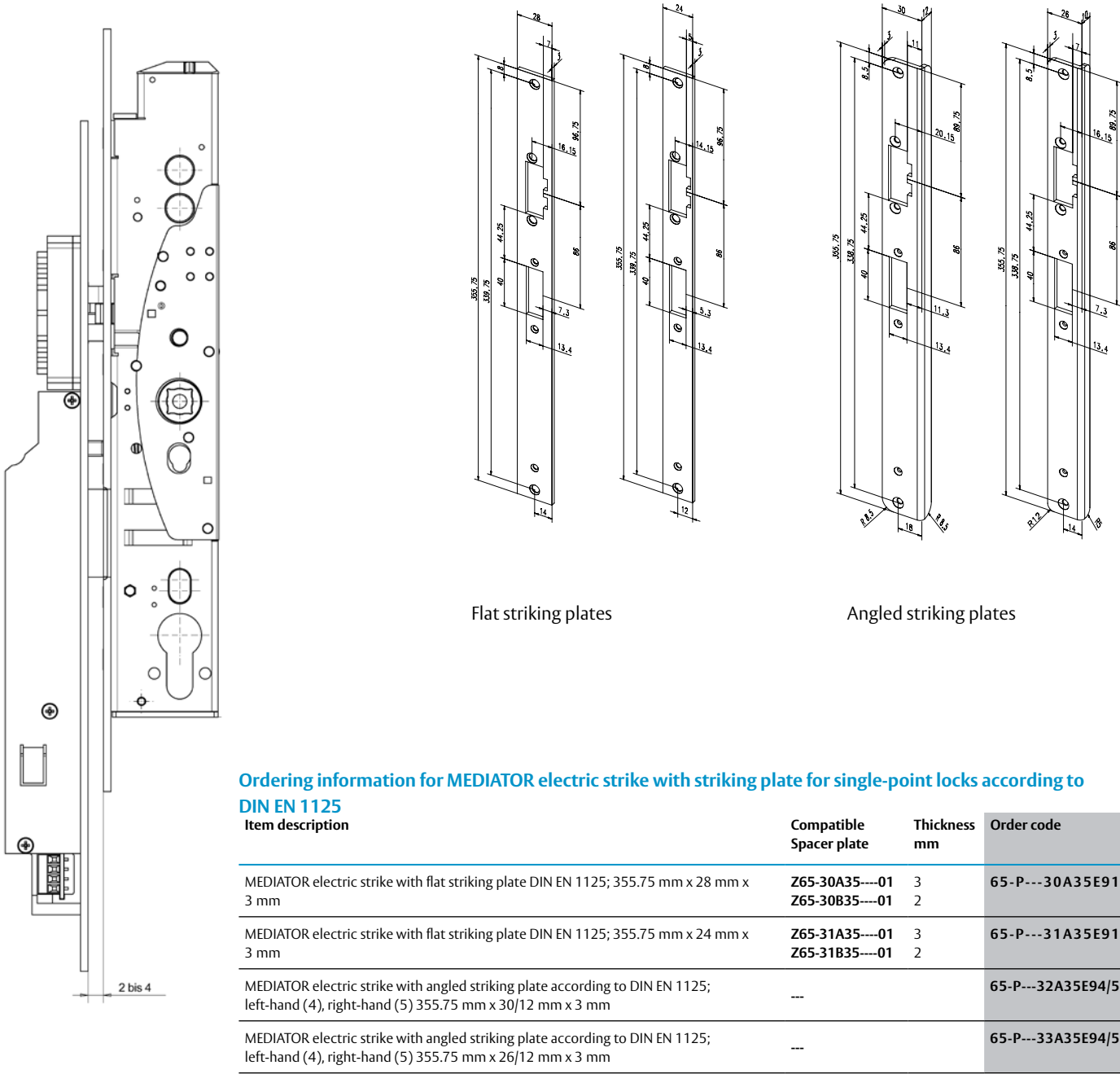
Ordering information for MEDIATOR electric strike with striking plate for multi-point locks, DIN EN 179

Item description	Compatible spacer plate	Order code
MEDIATOR electric strike with renovation angled striking, left-hand (4), right-hand (5) 500 mm x 30/34 mm x 3 mm	---	6 5 M - - - - 6 4 A 3 5 E 9 4 / 5
MEDIATOR electric strike with renovation angled striking, left-hand (4), right-hand (5) 500 mm x 26/34 mm x 3 mm	---	6 5 M - - - - 6 7 A 3 5 E 9 4 / 5
MEDIATOR electric strike with renovation angled striking, left-hand (4), right-hand (5) 500 mm x 24/34 mm x 3 mm	---	6 5 M - - - - 6 8 A 3 5 E 9 4 / 5

More striking plate variants on request

MEDIATOR® electric strike

Ordering information for version DIN EN 1125



Ordering information for MEDIATOR electric strike with striking plate for single-point locks according to DIN EN 1125

Item description	Compatible Spacer plate	Thickness mm	Order code
MEDIATOR electric strike with flat striking plate DIN EN 1125; 355.75 mm x 28 mm x 3 mm	Z65-30A35----01	3	65-P---30A35E91
	Z65-30B35----01	2	
MEDIATOR electric strike with flat striking plate DIN EN 1125; 355.75 mm x 24 mm x 3 mm	Z65-31A35----01	3	65-P---31A35E91
	Z65-31B35----01	2	
MEDIATOR electric strike with angled striking plate according to DIN EN 1125; left-hand (4), right-hand (5) 355.75 mm x 30/12 mm x 3 mm	---		65-P---32A35E94/5
MEDIATOR electric strike with angled striking plate according to DIN EN 1125; left-hand (4), right-hand (5) 355.75 mm x 26/12 mm x 3 mm	---		65-P---33A35E94/5

Ordering information for MEDIATOR electric strike with striking plate for multi-point locks according to DIN EN 1125

Item description	Compatible Spacer plate	Thickness mm	Order code
MEDIATOR electric strike with flat striking plate for multi-point locking; according to DIN EN 1125; 355.75 mm x 28 mm x 3 mm	Z65-30A35----01	3	65MP---30A35E91
	Z65-30B35----01	2	
MEDIATOR electric strike with flat striking plate for multi-point locking; according to DIN EN 1125; 355.75 mm x 24 mm x 3 mm	Z65-31A35----01	3	65MP---31A35E91
	Z65-31B35----01	2	
MEDIATOR electric strike with angled striking plate according to DIN EN 1125; left-hand (4), right-hand (5) 355.75 mm x 30/12 mm x 3 mm	---		65MP---32A35E94/5
MEDIATOR electric strike with angled striking plate according to DIN EN 1125; left-hand (4), right-hand (5) 355.75 mm x 26/12 mm x 3 mm	---		65MP---33A35E94/5

Note:
With use in accordance with DIN EN 1125, no adjustable latch components may be used!

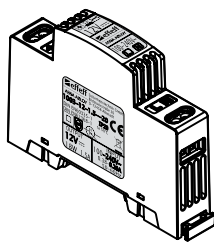
More striking plate variants on request

MEDIATOR® electric strike

Ordering information for accessories

Power supply units

Two different power supply units and a casing are available for surface or flush mounting.



Flush mount power supply

Surface mount housing for flush mount power supply

Order No.

1003-12-1,5--20

Order No.

1003UP-12-1--00

Order No.

7 460-----00

Technical data	Top-hat rail power supply	Flush mount power supply	Surface mount housing
Rated operating voltage	100-240 V AC	230 V AC +/- 15%	
Power rating	15 W	12 W	
Rated output voltage	12 V DC (regulated)	12 V DC (regulated)	
Rated output current	Max. 1.25 A	Max. 1 A	
Overload protection	Electronic	Electronic	
Operating temperature range	-20 °C to +40 °C	-20 °C to +40 °C	
Protection class (DIN EN 60529:2000-06)	IP 00	IP20	
Housing size (L x W x H)	92 mm x 17,5 mm x 68 mm	54.5 mm x 32 mm x 50.8 mm	80.5 mm x 41 mm x 125 mm
Casing colour	grey, RAL 7035	black	

MEDIATOR® electric strike

Ordering information for accessories



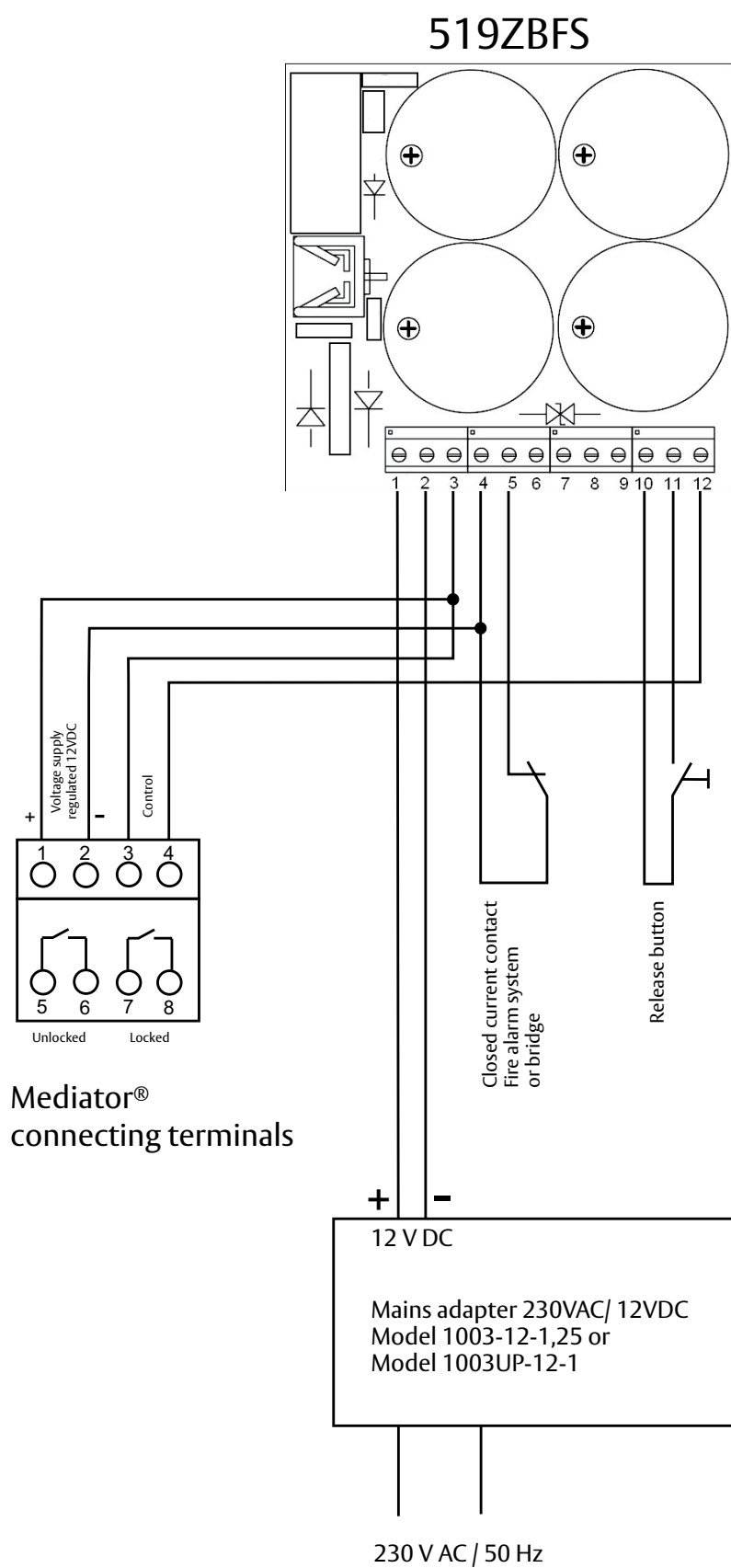
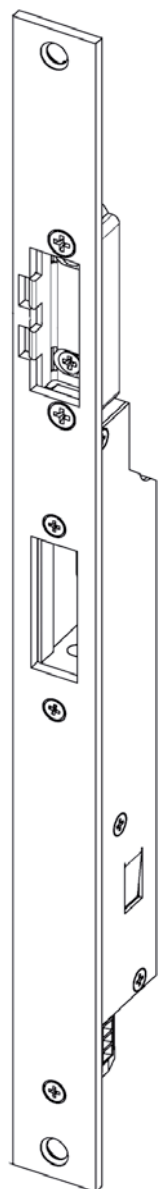
Note:
Please observe the remaining provisions on p. 10.

Fire protection module
When using the Mediator system on fire or smoke protection doors, FS Module 519ZBFs is required. In the event of a fire or power failure, this modules ensure that the motorised lock changes to locked status from whatever the status it was in and that the door can fulfil its fire safety function. It goes without saying that the panic function in the door handle or bar will continue to operate. A local fire alarm system or a smoke detector with relay output, such as Model 60 030 + 92000-10, must be connected for smoke detection.

Technical data	
Length	98 mm
Width	88 mm
Depth	43 (49) mm
Feature	
Order No.	
5 1 9 Z B F S - - - - - 0 0	

MEDIATOR connection
diagram for fire doors

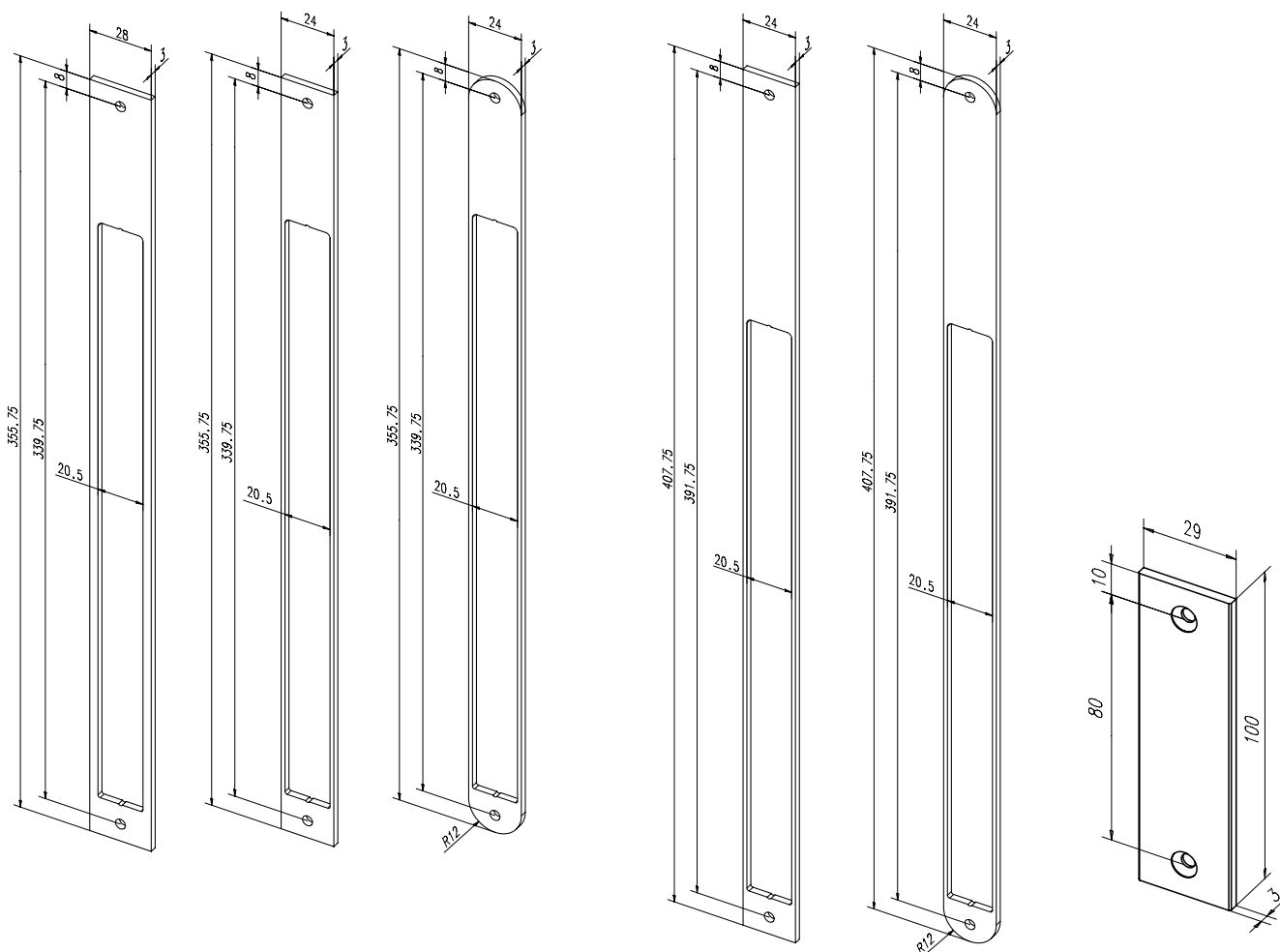
Mediator®



Ordering information for spacer plates for striking plates

Spacer plate

Stainless steel spacer plates for the striking plate for adjusting to the rebate clearance.



Spacer plate

Spacer plate
with arcRenovation spacer
plateRenovation spacer
plate with arc

Sliding piece

Ordering information for spacer plates and sliding pieces

Item description	Compatible with electric strikes with striking plates		Order code
Spacer plate; 355.75 mm x 28 mm x 3 mm	65-----30A35E91	65M-----30A35E91	Z 6 5 - 3 0 A 3 5 - - - 0 1
Spacer plate; 355.75 mm x 28 mm x 2 mm	65-----30A35E91	65M-----30A35E91	Z 6 5 - 3 0 B 3 5 - - - 0 1
Spacer plate; 355.75 mm x 24 mm x 3 mm	65-----31A35E91	65M-----31A35E91	Z 6 5 - 3 1 A 3 5 - - - 0 1
Spacer plate; 355.75 mm x 24 mm x 2 mm	65-----31A35E91	65M-----31A35E91	Z 6 5 - 3 1 B 3 5 - - - 0 1
Spacer plate with radius; 355.75 mm x 24 mm x 3 mm	65-----60A35E91	65M-----60A35E91	Z 6 5 - 6 0 A 3 5 - - - 0 1
Spacer plate with radius; 355.75 mm x 24 mm x 2 mm	65-----60A35E91	65M-----60A35E91	Z 6 5 - 6 0 B 3 5 - - - 0 1
Renovation spacer plate; 407.75 mm x 24 mm x 3 mm	65-----34A35E91	65M-----34A35E91	Z 6 5 - 3 4 A 3 5 - - - 0 1
Renovation spacer plate; 407.75 mm x 24 mm x 2 mm	65-----34A35E91	65M-----34A35E91	Z 6 5 - 3 4 B 3 5 - - - 0 1
Renovation spacer plate; 407.75 mm x 28 mm x 3 mm (without fig.)	65-----36A35E91	65M-----36A35E91	Z 6 5 - 3 6 A 3 5 - - - 0 1
Renovation spacer plate; 407.75 mm x 28 mm x 2 mm (without fig.)	65-----36A35E91	65M-----36A35E91	Z 6 5 - 3 6 B 3 5 - - - 0 1
Renovation spacer plate with radius; 407.75 mm x 24 mm x 3 mm	65-----61A35E91	65M-----61A35E91	Z 6 5 - 6 1 A 3 5 - - - 0 1
Renovation spacer plate with radius; 407.75 mm x 24 mm x 2 mm	65-----61A35E91	65M-----61A35E91	Z 6 5 - 6 1 B 3 5 - - - 0 1
Slider piece; 100 mm x 30 mm x 3 mm (see p. 14)			6 5 . 0 0 0 0 1 0

More extras for the door

Additional solutions for every security requirement.

MEDIATOR is a lock solution which provides proficient security. As often happens with many technical solutions, it can be made even better.

In the case of MEDIATOR, this can be achieved by combining the system with other products from the ASSA ABLOY product range: Security, door and window technology from the IKON and effeff brands. Below is an overview of the most important extras which make MEDIATOR even better.

Door Closer DC700 with standard sliding rail G195

ensures the door is actually pulled into the lock after someone enters or leaves and that the self-locking system is triggered.



Comprehensive information about door closers can be found in the ASSA ABLOY technical catalogue.



Order No.

2.1901-161 000 xx

Premium products for every requirement

IKON locking systems

Lock cylinders

Since inventing and patenting the profile cylinder over eighty years ago, IKON locking cylinders have been setting standards in many countries throughout the world. When the patent was granted, it gave rise to the age of the so-called security cylinder. This is a legacy which we are committed to and which we are proud of. The IKON brand offers a full spectrum of different lock technologies.

The selection from the locking cylinder portfolio shown here is a recommendation for combination with Mediator.

System R10

Locking wave profile



System SK6:

Vector profile



System SK6:

Multi-profile



System SK6:

Locking wave profile with undercut



We have the ideal locking solution for the application.
See the locking system brochures for more details.



Order No.

WS 8229

Customer-No.:
Address:

Company

Branch

Contact

Telephone

Fax

Email

Street / POB

Postal Code / Town

ASSA ABLOY
Sicherheitstechnik GmbH

Bildstockstraße 20
72458 Albstadt
GERMANY
Tel. +49 7431 123-700
export.effeff@assaabloy.com

Order Date:

Order Number	Pce.

Urgent orders can also
be placed via email:

As a proven supplier of door release systems, ASSA ABLOY is known for reliable and prompt deliveries. We offer you twomethods of ordering: You can fax us the completed form or send us details of your requirements via email to the following address: **export.effeff@assaabloy.com**

Quotations and deliveries are made in accordance with our conditions of delivery and payment.

Our products – quality, know-how and innovation



Electric strikes

With electric strikes, you can unlock a door at the push of a button – without needing to go to the actual door yourself.

effeff electric strikes offer high standards of security and convenience and a suitable electric strike for every installation location. This we can guarantee worldwide as effeff takes into consideration both national and international rules and regulations.

effeff wins over with its certified and security electric strikes due to its sophisticated solutions for smoke protection doors, fire protection doors and doors along escape routes. Our wide range for high security

areas provides solutions for glass doors, sliding doors and clean room doors as well as for explosive areas or seal door systems.

- Standard electric strikes
- Smoke and fire protection electric strikes
- Escape door electric strikes
- Special electric strikes
- Accessories



MEDIATOR®

Entrance doors to apartment buildings – an issue which is always causing problems. Some people always lock the door, others never do.

With MEDIATOR®, ASSA ABLOY Sicherheitstechnik now offers a simple, yet brilliant solution:

This innovative system ensures doors always lock automatically as soon as they close due to the self-locking escape door lock and an effeff linear electric strike.

The door can also be opened for visitors from inside apartments using the electric strike.

MEDIATOR® can do much more than this, however.

It also ensures doors can be opened from the inside at any time using the door handle, even when doors are locked.

This means everyone can leave the building in the event of an emergency, whether they have a key or not.

Apartment block entrance doors can be retrofitted with MEDIATOR quickly and easily at a very reasonable price.



Security locks

“Security lock” is the most accurate description of effeff locks. Security provides protection against intrusion, thus ensuring people and valuables are safe from harm. effeff lock products provide such comprehensive protection for you and your property. With their anti-panic function and self-locking systems, effeff’s security locks guarantee maximum mechanical security combined with maximum convenience for users.

- Mechanical security locks
- Microswitch security locks
- Motorized security locks
- Electric security locks
- Multipoint security locks
- Accessories



Access control

Whether the main or side entrance, strongroom, development department or laboratory, there are certain areas in buildings which need to be locked at all times.

Access control systems regulate access to protected areas, limiting entrance to authorised groups of people without needlessly disrupting their day-to-day business.

A straightforward solution for greater security, effeff access control systems protect and control buildings, individual rooms or other security-relevant areas.

We supply a comprehensive range of different technolo-

gies, devices and systems, which can be tailored to meet respective specific security needs.

effeff access control systems meet our clients’ individual requirements and are used in private and public buildings, the health sector, leisure facilities, industrial facilities and production plants.

- Access control door fittings
- Access control systems



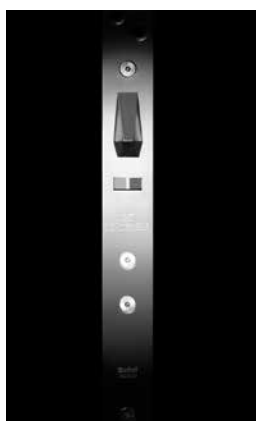
Escape route technology

effeff's escape route systems fully comply with requirements for uncompromising personal safety and maximum protection for property. You can depend on effeff's expertise and reliability in emergency situations. Our escape route systems guarantee safe operation of escape route doors, even though under normal circumstances doors may have integrated automatic locking systems or can only be opened by authorised users. Safer use of escape routes is assured at all times in the event of an emergency. effeff electric escape door control systems provide protection and safety in places such as department

stores, schools, kindergartens, office buildings, airports and exhibition halls.

We also supply ideal solutions for specific uses such as restricted areas in hospitals.

- Escape door locking systems
- Escape door monitoring



Electric bolt

effeff electric deadbolts are a reliable complement to locks and strikes used for specific requirements. They can be fitted to special doors such as swing doors or sliding doors, where they are often used as an additional locking device. Where doors are locked with an integrated monitoring contact, the locking status can be monitored, meaning, for instance, a system or machine can only start up if the door concerned is securely locked.

The bolt is suitable for a wide variety of uses, ranging from mere drawers through to doors in lifts and high security areas.

- Door dead bolts
- High security dead bolts
- Motorized dead bolts
- Cabinet locks



Electric holding magnets

A large selection of electric holding magnets is an important part of effeff's locking systems range. The effeff range includes authorised models for locking escape route doors as well as standard magnets. Thanks to low-noise operation and the benefits of retro-fitting, magnets are highly suitable as additional locking devices in doors.

- Electric magnets for inside and outside doors
- Electric magnets for escape door applications
- Electric magnets for holding doors open
- Accessories



Arrester systems

Whether the main or side entrance, strongroom, development department or laboratory, there are certain areas in buildings which need to be locked at all times. Access control systems regulate access to protected areas, limiting entrance to authorised groups of people without needlessly disrupting their day-to-day business. A straightforward solution for greater security, effeff access control systems protect and control buildings, individual rooms or other security-relevant areas. We supply a comprehensive range of different technologies, devices and systems, which can be tailored to meet respective specific security needs.

effeff access control systems meet our clients' individual requirements and are used in private and public buildings, the health sector, leisure facilities, industrial facilities and production plants.

- Access control door fittings
- Access control systems

The ASSA ABLOY Group is the global leader in access solutions. Every day we help people feel safe, secure and experience a more open world.

ASSA ABLOY
Opening Solutions

ASSA ABLOY Sicherheitstechnik GmbH
Bildstockstrasse 20
72458 Albstadt
GERMANY
Tel. +49 7431 123-700
albstadt@assaabloy.com
www.assaabloyopeningsolutions.de