

# WSW – the mechanical reversible keying system



You can never be too safe:  
WSW as a modular system  
for restricted locking systems

IKON – The locking systems specialist since 1926!

**IKON**  
**ASSA ABLOY**

ASSA ABLOY, the global leader  
in door opening solutions

## The high-grade restricted locking system – the WSW reversible keying system

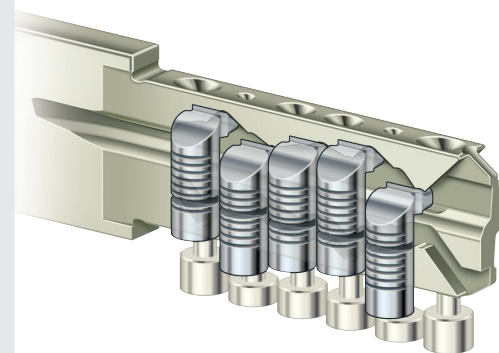
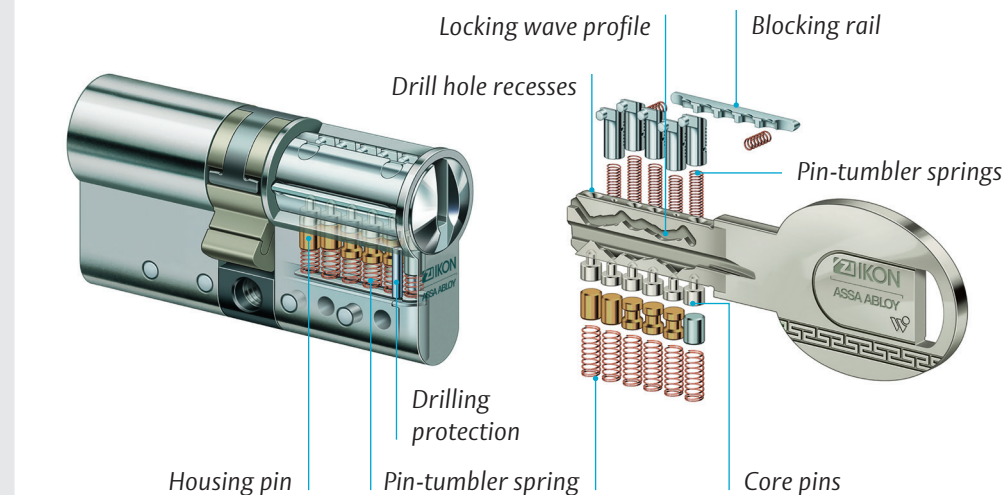
The time-tested WSW reversible keying system from the IKON brand combines the traditional scanning with pin tumblers and additional scanning with finger pins to check the wave milling in the key.

Keys and key design are part of the current trend and meet today's requirements regarding ma-

terial and construction. The reversible keys are made of nickel silver and the oval shape of the key neck ensures that the keys are comfortable to handle.

No matter which way up you hold it, the WSW key will always fit.

### How the WSW reversible keying system works

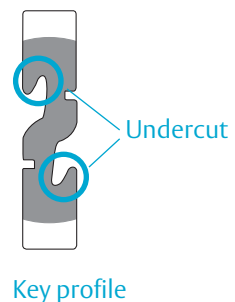


With the reversible keying system, scanning is carried out by pin tumblers positioned centrally in the locking cylinder (core and housing pins), as well as by finger pins mounted on the side of the locking cylinder core. A locking operation only be performed after the key has been scanned correctly by the core and finger pins.

The undercut in the key profile serves to scan the finger pins precisely and also gives the key a highly complex shape.

This reversible keying system meets requirements for technical protection against key copying and lock picking on a very high level.

- If the undercut is missing, the lock will not operate
- The key cannot be inserted if the undercut is missing



## The better the locking cylinder, the securer the door



The WSW system consistently applies the modular design in practice on the basis of time-tested locking cylinder technology.

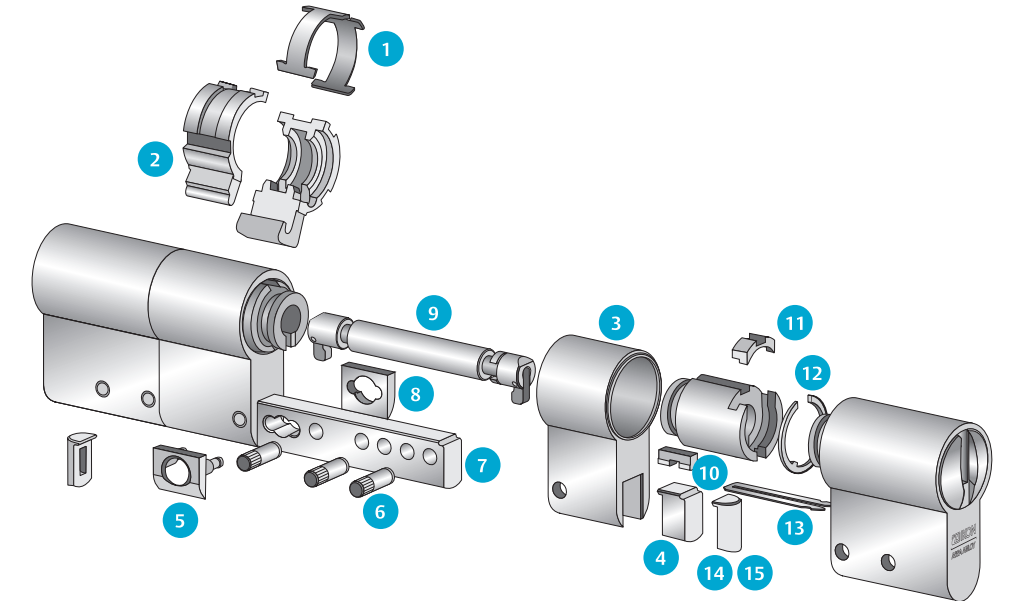
Suitable extensions for the locking cylinder core, coupling, locking cylinder housing and cross bar allow you to quickly and easily adjust the locking cylinder length on site. This puts the right

locking cylinder for nearly any application at your fingertips within a very short time.

Reversible key cylinders in individually keyed locks are DIN and VdS tested and include drilling protection on the indicated side.

- 1 Cam springs
- 2 Cam
- 3 Housing extension
- 4 Housing filler piece
- 5 Infill clip with hook
- 6 Cylinder pin
- 7 Cross bar
- 8 Infill clip cover
- 9 Coupling for GE=BS
- 10 Double clamping piece
- 11 Filler piece for GE=BS
- 12 Safety ring
- 13 Sealing clamp
- 14 Drilling protection
- 15 Dummy drilling protection

### The modular design of the WSW reversible keying system



### The most important advantages of the WSW reversible keying system

- 11 (6+5) spring-mounted pin tumblers = protection against key copying protection
- Key with undercut and wave coding on both sides. Scanning via five additional spring-loaded wave scanner pins (finger pins) = lock picking protection
- Protected key profile with security card
- Certification and marking in accordance with VdS ★★★ (B), optionally VdS ★★★ (BZ)
- Certification and marking in accordance with DIN 18252, class 82\* as standard
- Drilling protection class 2 (AB=2), exterior side only (A)
- Can be unlocked on both sides (GE=BS) = safety lock function
- Effective protection against picking due to special profile design and pin combination
- Modular system for quick and easy changes in length
- Key with non-slip, oval-shaped key head

Note:  
Attack Resistance  
Classes 1 and 2 require  
no pulling protection  
if the cylinder is used  
with drilling protection  
in combination with  
ES2 ZA class security  
fitting with pulling  
protection

ASSA ABLOY is the global  
leader in door opening solutions,  
dedicated to satisfying  
end-user needs for security,  
safety and convenience



ASSA ABLOY  
Sicherheitstechnik GmbH

Attilastrasse 61 – 67  
12105 Berlin  
GERMANY  
Tel. + 49 30 8106-0  
[berlin@assaabloy.com](mailto:berlin@assaabloy.com)

[www.assaabloy.de](http://www.assaabloy.de)