



# Electric bolts Technical information

  
ASSA ABLOY

Experience a safer  
and more open world



About us.

Whatever you want to secure, protect, maintain –  
we have the technology you require.





Elbphilharmonie Hamburg

Breaking new grounds, implementing new technologies, developing new ideas. Founded in 1936, the company effeff based in Albstadt became the market leader in the field of door control systems by following a consistent strategy. After starting the electric strike production in 1947, a comprehensive product range has been gradually developed, which enables effeff to offer suitable solutions for every door.

February 1st, 2000, effeff joined the ASSA ABLOY Group based in Stockholm, Sweden and merged at the beginning of 2005 with IKON GmbH Präzisionstechnik, Berlin who also belong to the group to become ASSA ABLOY Sicherheitstechnik GmbH.



HafenCity University Hamburg

IKON and effeff, both renowned and well-established brands within the market remain under ASSA ABLOY Sicherheitstechnik GmbH as do the production sites of Berlin and Albstadt.

ASSA ABLOY is the leading manufacturer and supplier of mechanical and electromechanical locks and related products worldwide. Our customers benefit from the extensive know-how of the largest international group of companies, meeting every requirement in terms of total security and comfort throughout the world.



Bauhaus Dessau



Library Stuttgart

# We assist you with words and deeds

The experts at ASSA ABLOY Sicherheitstechnik would be pleased to advise you which electric strike model is most suitable for which installation position.

**Hotline** Technical advice

**+49 7431 123-381**

**Technical advice**

In terms of technical advice with us, you will be supported by professionals who will continue to help you on every question on technical details. Of course you can also be put into contact with specialists regarding of technical risk assessments or key accounts.

**Hotline** Sales / Order processing

**+49 7431 123-700**

**Customer Service Sales / Order processing**

With our commercial customer services you can clarify all questions relating to your purchase order, for example the status of the order processing, the delivery date, purchase order changes, but also returns or guarantee issues. Use this simple and quick option to get information or help from our specialists. We will do that with pleasure.



**Training**

With the ASSA ABLOY Academy, we offer you a free eLearning tool. Learn whenever and wherever you want: [www.effeff.de](http://www.effeff.de) → Section **Service**.

**Exhibitions**

You will find effeff at many national and international exhibitions. You can obtain the exact dates from our website: [www.effeff.de](http://www.effeff.de)

## Our product catalogue online at [www.effeff.de](http://www.effeff.de)

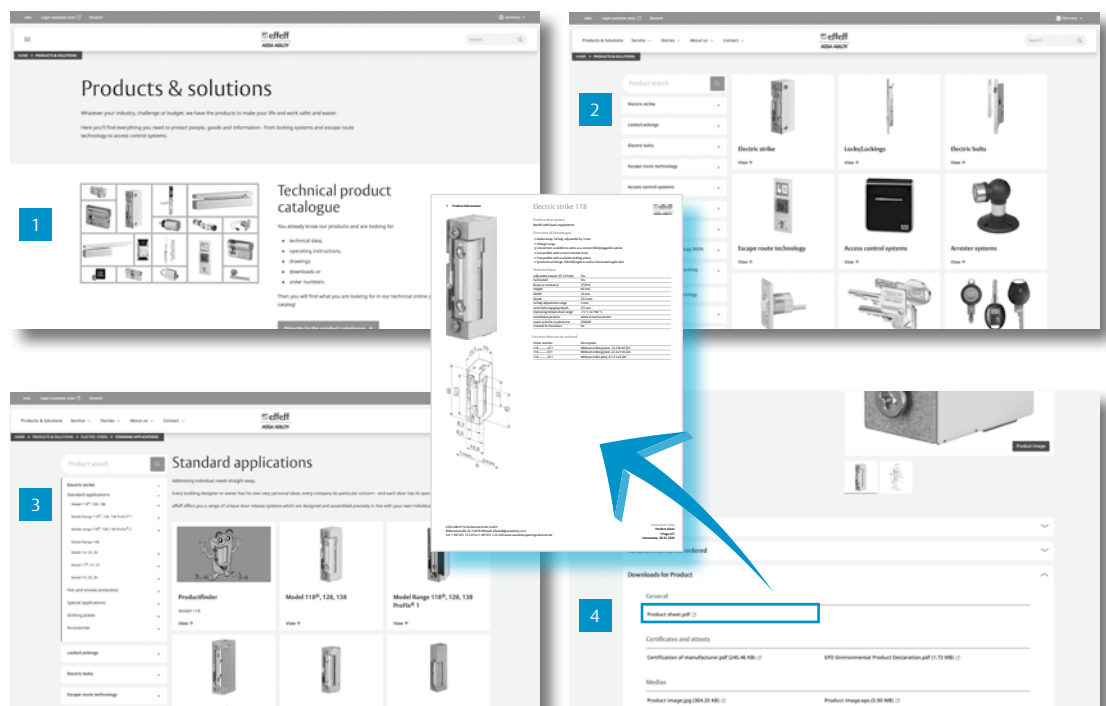
Fast and up-to-date comprehensive product information at any time

1 Clearly arranged layout according to our different product areas...

2 the submenu will help you navigate through our database ...

3 ... to find the model you need.

4 By just clicking on „Download for Product“, you can generate a detailed specification sheet.



# Contents

## Where can I find everything?

<b>About us</b>	<b>2 - 3</b>
<b>Contents</b>	<b>5</b>
<b>TECHNILOCK® model L4</b>	
Overview of characteristics	7
TECHNILOCK® L4 fail-locked	8
TECHNILOCK® L4 fail-unlocked	9
TECHNILOCK® L4 handle version	10
Accessories	11 – 12
Strike plates	13 – 16
<b>Electric bolts</b>	
Model 842 and accessories	17 – 18
Model 843	19
Model 843-3 and accessories	20 – 21
Model 843 ZY and accessories	22 – 23
Model 843G	24
Power supplies model 842/843/843ZY	25
Model, 843/843ZY mounting tips	26
Drop bolt model 1841, 3841 and accessories	27 – 28
Lead covers	29 – 31
Explanations for functional modes fail-locked, fail-unlocked	32
<b>Order form</b>	<b>33</b>



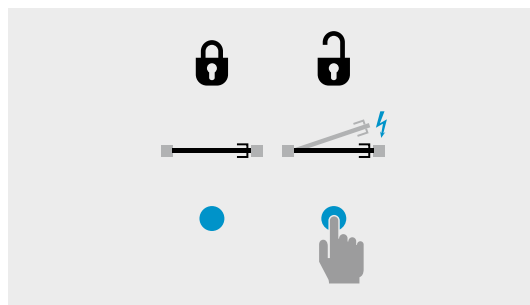
# TECHNILOCK® L4

## A bolt with many advantages

Doors secured with Technilock® door bolts provide maximum security and reliability due to their modern technology and high quality.

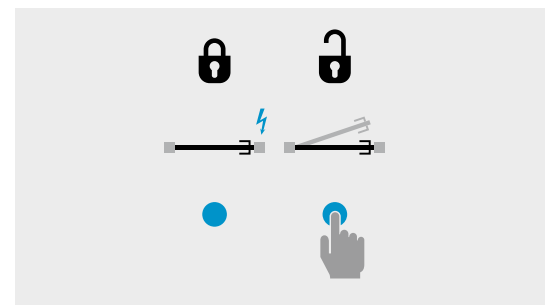
### Overview of characteristics:

- Mechanical impact resistance (very high impact resistance with fail-locked version).
- Max. static bolt load 50,000 N.
- Automatic strike plate detection.
- Automatic locking.
- Comprehensive alarm and monitoring functions.
- Programmable monitoring contacts.
- Programmable unlocking time.
- The cylinder function can be used to lock and unlock manually. (Special feature for fail-locked: Manual locking can only be deactivated using a locking cylinder.)
- Pre-load for fail-lock version: 80N
- Pre-load for fail-unlocked version: 10N
- Pre-loading always ensures reliable unlocking and applications with swing door drives work without any problems
- Interlocking doors (air-pressured doors) or seal-pressured doors will also unlock securely
- Integrated red LED for indicating undervoltage
- Integrated micro-controller: No additional external control required
- Options for activation: Systems such as access control, central control and monitoring panels, freely programmable controllers and radio-controlled remote control system, etc.
- A plug-in relay board provides potential free contacts
- Horizontal and vertical installation in the frame (when installed horizontally, only closing downward is possible, must not lock into floor)
- Can be installed vertically in the door leaf
- Can be used for protected outdoor installation



### Features of the fail-locked version

- The fail-locked version always keeps the door closed. Here, the focus is on secure locking (security).
- A secure closure is ensured in the event of a power failure/fault.
- Very high locking pressure and high impact resistance.
- Static bolt load in accordance with DIN 18251 20,000N (destruction-proof).
- Extended range of functions: Two additional functions ensure daily operations continue in the event of power failure and breakdowns. In case of power failure, one emergency locking operation is possible with onboard reserve power.
  - Holds the bolt of opened door unlocked even in the event of a power failure.
  - The cylinder function can be used to lock and unlock manually. After manual locking, the bolt in fail-locked version cannot be unlocked via the actuation signal. Manual locking can only be cancelled by unlocking via the locking cylinder.
- Locking mechanism follows a secure locking operation (security sequence).
- Direct activation by a fire alarm/smoke detection system is not possible.



### Features of the fail-unlocked version:

- In the fail-unlocked version, the door is always unlocked without power. The focus is on opening in case of danger.
- In the event of a power failure/fault, door is unlocked.
- Application: When a high locking pressure is required, but the door must open in the event of a power failure.
- Actuation by fire alarm/smoke alarm system is possible to ensure safe exit from the hazardous area.
- Cannot be used as an electric locking system in accordance with EltVTR or DIN EN13637.

# Electric bolts

## TECHNILOCK® L4 fail-locked



### Technilock® Model 844L4

Electro-mechanical door bolt for use in high security areas.

#### Features of the fail-locked version:

The fail-locked version always keeps the door closed in case of a power failure. Here, the focus is on secure locking (security).

A secure closure is provided in the event of a power failure/fault.

Very high locking pressure and high impact resistance. Static bolt load in accordance with DIN 18251 20,000N (destruction-proof).

#### Extended range of functions:

Two additional functions ensure daily operations continue in the event of power failure and breakdowns. Emergency locking also takes place in the event of a breakdown.

Holds the bolt of opened door unlocked even during power failure.

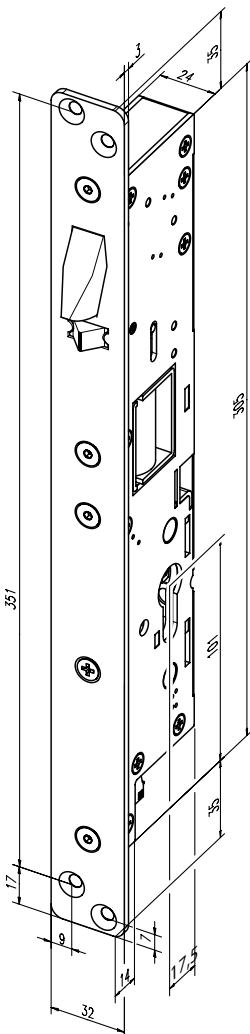
The cylinder function can be used to lock and unlock manually. After manual locking, the bolt in fail-locked version cannot be unlocked via the actuation signal. Manual locking can only be cancelled by unlocking via the locking cylinder.

Mechanical steering device.

Direct activation by a fire alarm/smoke detection system is not possible.

#### Please note:

Strike plate is not included and must be ordered separately.



Technical attributes	
Input operating voltage	24 V DC, stabilised
Rated operating voltage tolerance range	± 10%
Rated current consumption	Impulse current: 4 A (0,5 sec); hold current: 0,25 A
Bolt side load destruction proofed	20000 N
Max. bolt side load	50000 N
Bolt throw	20 mm
Case depth	Backset + 17,5 mm
Operating temperature range	-20 °C to +60 °C
Distance between faceplate and strike plate	Min. 2 mm to max. 5,5 mm

Article / Feature	Order no.
Backset 30 mm, fail-locked with S-latch, Euro profile cylinder	8 4 4 L 4 3 0 E S E - - - -
Backset 35 mm, fail-locked with S-latch, Euro profile cylinder	8 4 4 L 4 3 5 E S E - - - -
Backset 40 mm, fail-locked with S-latch, Euro profile cylinder	8 4 4 L 4 4 0 E S E - - - -
Backset 60 mm, fail-locked with S-latch, Euro profile cylinder	8 4 4 L 4 6 0 E S E - - - -



#### Note:

The fail-locked version always keeps the door closed. Here, the focus is on secure locking (security).

#### Application:

A secure closure is provided in the event of a power failure/fault.

- Very high locking pressure and high impact resistance

- Static bolt load in accordance with DIN 18251 20,000N (destruction-proof)



# Electric bolts

## TECHNILOCK® L4 fail-unlocked



### Technilock® Model 844L4

Electro-mechanical door bolt for use in high security areas.

#### Features of the fail-unlocked version:

In the fail-unlocked version, the door is always unlocked without power. The focus is on opening in the event of danger.

In the event of a power failure/fault, the lock is opened.

#### Application:

When a high locking pressure is required, but the door must open in the event of a power failure.

Actuation by fire alarm/smoke alarm system is possible to ensure safe exit from the hazardous area.

Cannot be used as an electric locking system in accordance with EltVTR or DIN EN13637.

#### Please note:

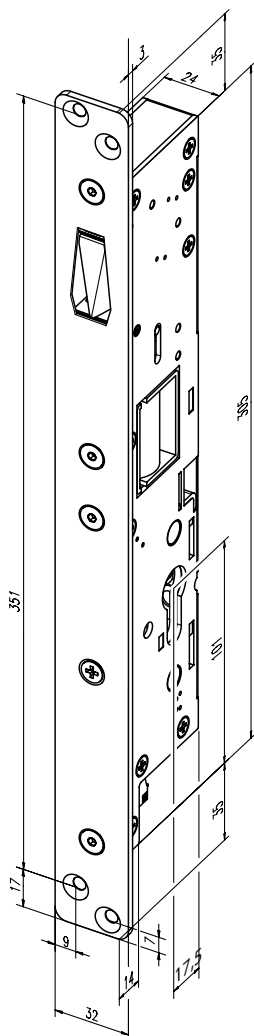
Strike plate is not included and must be ordered separately.

#### Technical attributes

Input operating voltage	24 V DC, stabilised
Rated operating voltage tolerance range	± 10%
Rated current consumption	Impulse current: 4 A (0,5 sec); hold current: 0,25 A
Bolt side load destruction proofed	20000 N
Max. bolt side load	50000 N
Bolt throw	20 mm
Case depth	Backset + 17,5 mm
Operating temperature range	-20 °C to +60 °C
Distance between faceplate and strike plate	Min. 2 mm to max. 5,5 mm

#### Article / Feature

Article / Feature	Order no.
Backset 30 mm, fail-unlocked, Euro profile cylinder	8 4 4 L 4 3 0 E S A - - - -
Backset 35 mm, fail-unlocked, Euro profile cylinder	8 4 4 L 4 3 5 E S A - - - -
Backset 40 mm, fail-unlocked, Euro profile cylinder	8 4 4 L 4 4 0 E S A - - - -
Backset 60 mm, fail-unlocked, Euro profile cylinder	8 4 4 L 4 6 0 E S A - - - -



#### Note:

With the fail-unlocked version, the door opens.

The focus is on escape options in case of danger (safety).

In the event of a power failure/fault, the door opens.

#### Application:

When a high locking pressure is required, but the door must open in the event of a power failure (safety).

Actuation by fire alarm/smoke alarm system is possible to ensure safe exit from the hazardous area.

# Electric bolts

## TECHNILOCK® L4 handle version



### Technilock® Model 844L4 handle version

Electro-mechanical door bolt for use in high security areas. The bolt is provided with an additional follower for unlocking with a door handle.

**Please note:**

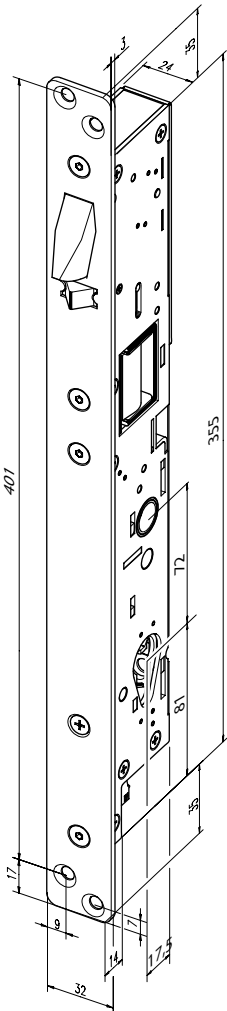
Strike plate is not included and must be ordered separately.

#### Technical attributes

Input operating voltage	24 V DC, stabilised
Rated operating voltage tolerance range	-10% / +15%
Rated current consumption	Impulse current: 4 A (0,5 sec); hold current: 0,25 A
Bolt side load destruction proofed	20 N
Max. bolt side load	50 N
Bolt throw	20 mm
Case depth	Backset + 17,5 mm
Operating temperature range	-20 °C to +60 °C
Distance between faceplate and strike plate	Min. 2 mm to max. 5,5 mm

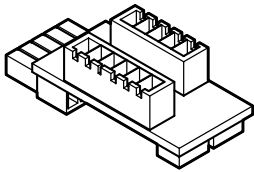
#### Article / Feature

Article / Feature	Order no.
Handle version - Backset 35 mm, Fail-locked with control latch, Follower 9 mm, Euro Profile cylinder	8 4 4 L 4 3 5 E H E - 9 - - -
Handle version - Backset 60 mm, Fail-locked with control latch, Follower 9 mm, Euro Profile cylinder	8 4 4 L 4 6 0 E H E - 9 - - -



# Electric bolts

## TECHNILOCK® L4 Accessories

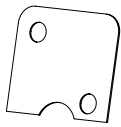


### Circuit board

Directly mounted to the connectors of the TECHNILOCK® L4.  
This PCB provides two potential-free contacts. Not compatible with additional follower.

Technical attributes	
Contact	Potential free

Article / Feature	Order no.
potential-free contact; compatible with M4; only for Technilock® L4 variant without handle follower	8 4 4 L 4 Z B P 1 - - - - 0 0

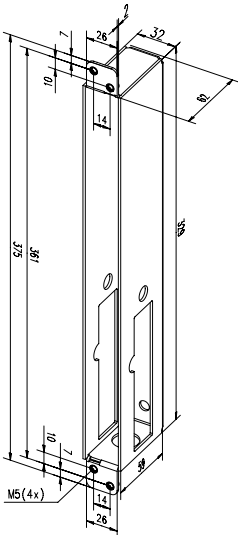


### Spacer plates, model 844L4ZBD1

Spacer plate for strike plate as compensation for excessively large strike margin.

Technical attributes	
Thickness	0,5 mm

Article / Feature	Order no.
Spacer plates	8 4 4 L 4 Z B D 1 - - - - 0 0



### Bolt case model 844L4RGK

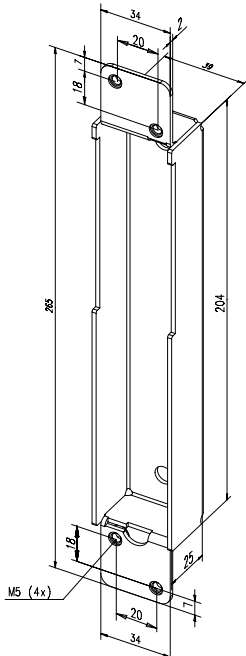
The bolt case is designed for easier mounting of the Technilock® in hollow profiles, such as steel frames and steel profiles.

Not suitable for Technilock® L4 handle variant.  
35 mm backset is illustrated.

The bolt case protects the lock from dirt and debris and provides the option of pre-fitting the door before installation.  
It also reinforces the door.

Technical attributes	
Backset	30, 35, 40, 45, 60 mm

Article / Feature	Order no.
30 mm backset, only for Technilock® L4 variant without handle follower	8 4 4 L 4 R G K 3 0 - - - 0 1
35 mm backset, only for Technilock® L4 variant without handle follower	8 4 4 L 4 R G K 3 5 - - - 0 1
40 mm backset, only for Technilock® L4 variant without handle follower	8 4 4 L 4 R G K 4 0 - - - 0 1
60 mm backset, only for Technilock® L4 variant without handle follower	8 4 4 L 4 R G K 6 0 - - - 0 1



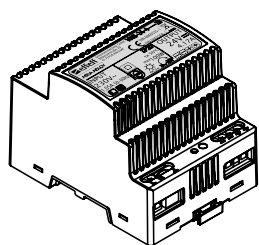
### Strike plate box, model 844L4SBK

For the mounting of the L4 strike plate with a length of 265 mm.

Article / Feature	Order no.
Strike plate box, model 844L4SBK	8 4 4 L 4 S B K - - - - 0 1

# Electric bolts

## TECHNILOCK® L4 Accessories



**Power supply unit model 1003**

Technical attributes	
Overload protection	Electronical
Protection rating	II
Operating temperature range	-10°C + 50°C
Length	93 mm
Height	68 mm
Mounting method	Top-hat rail distributor
Class of protection	IP 20
Material housing	plastic
Approval DIN EN 60335-1	yes
Approval DIN EN 62368-1	yes

Article / Feature	Order no.
24 V DC, stabilised, 4 A, top-hat rail	1 0 0 3 - 2 4 - 4 - - - - 2 0

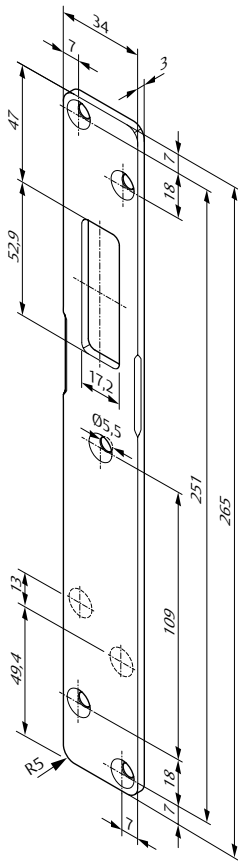


**Connecting cable**

Article / Feature	Order no.
For L4 and L3; 25 m long	8 4 4 Z B K A B 0 1 - - - 0 0

# Electric bolts

## TECHNILOCK® L4 strike plates



Strike plate with integrated magnets suitable for Technilock® L4

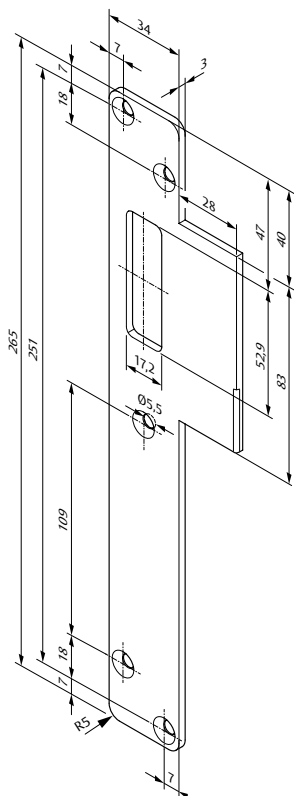
### The advantages at a glance

- DIN left and right usable

Technical attributes	
Version	Standard
Length	265 mm
Width	34 mm
Thickness	3 mm
Case depth	3 mm + 3 mm*
Material	EST: 1.4301
DIN direction	1
DIN direction	universal
Color	Stainless steel

\* = material thickness + magnet build-up

Surface	DIN direction	Order no.
35 Stainless steel	1 universal	<b>844L4SBL1----01</b>



Flanged strike plate L4 standard with integrated magnets for Technilock® 844L4

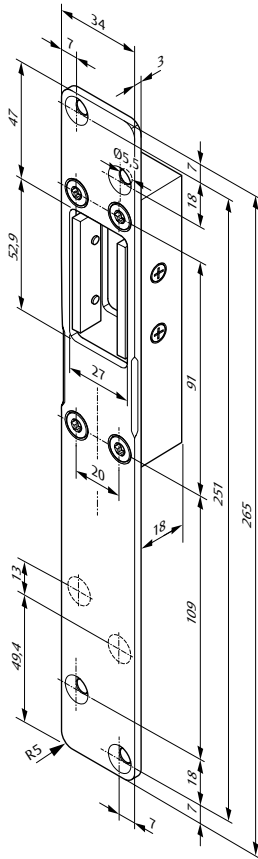
Technical attributes	
Version	Standard, LAP
Length	265 mm
Width	34 mm
Thickness	3 mm
Case depth	3 mm + 3 mm*
Color	Stainless steel
Material	EST: 1.4301
DIN direction	4
DIN direction	Left-hand

\* = material thickness + magnet build-up

Surface	DIN direction	Order no.
35 Stainless steel	4 left-hand	<b>844L4SBL2----04</b>
35 Stainless steel	5 right-hand	<b>844L4SBL2----05</b>

# Electric bolts

## TECHNILOCK® L4 strike plates



Adjustable L4 strike plate with integrated magnets suitable for Technilock® L4

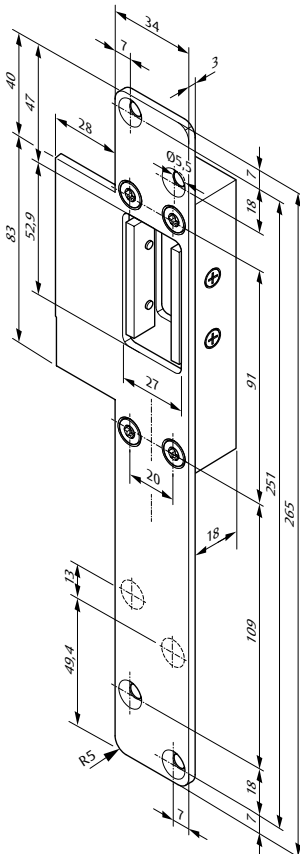
### The advantages at a glance

- DIN left and right usable

Technical attributes	
Version	Adjustable
Length	265 mm
Width	34 mm
Thickness	3 mm
Case depth	3 + 18 mm*
Color	Stainless steel
Material	EST: 1.4301
DIN direction	1
DIN direction	universal

\* = material thickness + bolt pocket build-up

Surface	Din direction	Order no.
35 Stainless steel	1 universal	844L4SBL3----01



Adjustable flanged strike plate L4 with integrated magnets for Technilock® L4

### The advantages at a glance

- DIN left

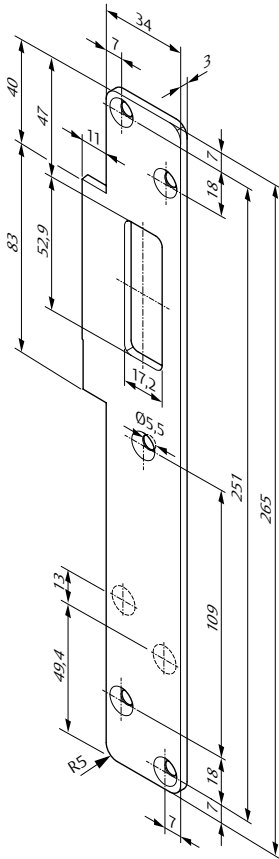
Technical attributes	
Version	Adjustable, flanged
Length	265 mm
Width	34 mm
Thickness	3 mm
Case depth	3 + 18 mm*
Color	Stainless steel
Material	EST: 1.4301
DIN direction	4
DIN direction	Left-hand

\* = material thickness + bolt pocket build-up

Surface	Din direction	Order no.
35 Stainless steel	4 left-hand	844L4SBL4----04
35 Stainless steel	5 right-hand	844L4SBL4----05

# Electric bolts

## TECHNILOCK® L4 strike plates



Flanged strike plate L4 standard with integrated magnets for Technilock® 844L4

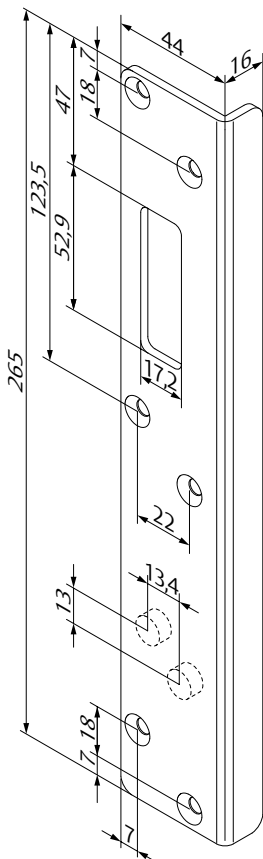
### The advantages at a glance

- DIN left

Technical attributes	
Version	Standard, LAP
Length	265 mm
Width	34 mm
Thickness	3 mm
Case depth	3 mm + 3 mm*
Color	35
Color	Stainless steel
Material	EST: 1.4301
DIN direction	4
DIN direction	Left-hand

\* = material thickness + magnet build-up

Surface	Din direction	Order no.
35 Stainless steel	4 left-hand	844L4SBL5----04
35 Stainless steel	5 right-hand	844L4SBL5----05



Angled strike plate L4 adjustable with integrated magnets for Technilock® 844L4

### The advantages at a glance

- DIN left

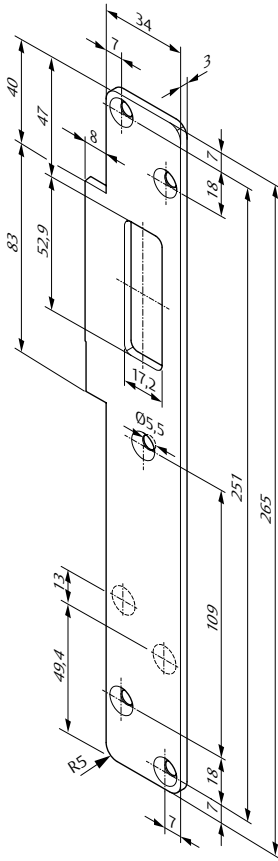
Technical attributes	
Version	Angled strike plate
Length	265 mm
Thickness	3 mm
Case depth	3 mm + 3 mm*
Color	35
Color	Stainless steel
Material	EST: 1.4301
DIN direction	4
DIN direction	Left-hand

\* = material thickness + magnet build-up

Surface	Din direction	Order no.
35 Stainless steel	4 left-hand	844L4SBL6----04
35 Stainless steel	5 right-hand	844L4SBL6----05

# Electric bolts

## TECHNILOCK® L4 strike plates



Flanged strike plate L4 standard with integrated magnets for Technilock® 844L4

### The advantages at a glance

- DIN left

Technical attributes	
Version	Standard, LAP
Length	265 mm
Width	34 mm
Thickness	3 mm
Case depth	3 mm + 3 mm*
Color	35
Color	Stainless steel
Material	EST: 1.4301
DIN direction	4
DIN direction	Left-hand

\* = material thickness + magnet build-up

Surface	Din direction	Order no.
35 Stainless steel	4 left-hand	<b>844L4SBL7----04</b>
35 Stainless steel	5 right-hand	<b>844L4SBL7----05</b>

### Please note:

Replacement strike plates for Technilock M4 available on demand.



# Electric bolts

## Motorised power cam bolt model 842



### Motorised Power Cam Bolt 842-SA

The model 842 is an electromotive swing bolt, which pivots the bolt outwards and also retracts it by means of a high motorised force.

The bolt moves into the strike plate with a V-shaped cut-out.

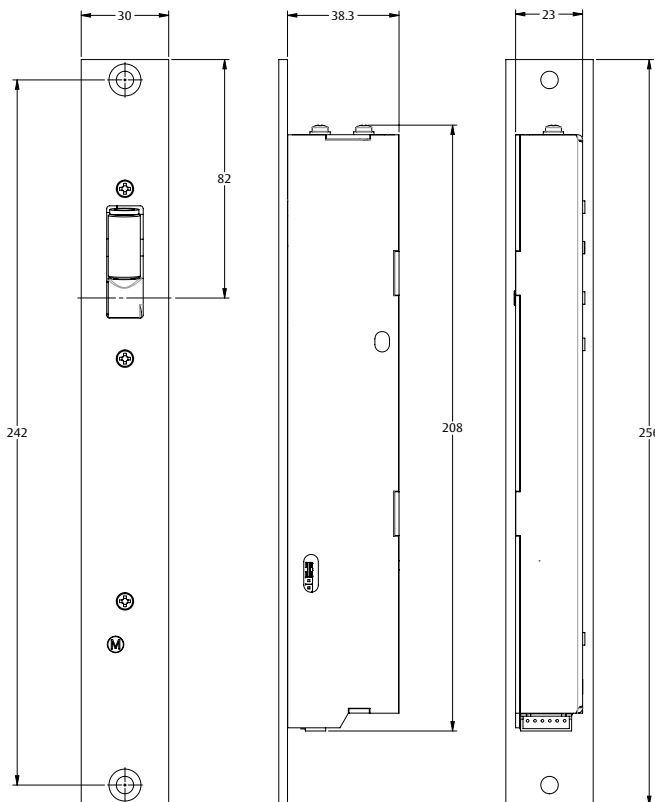
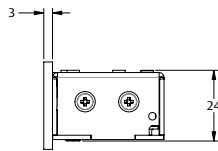
This has the advantage that the bolt can also be pushed out if the strike plate and bolt are not in a fully aligned position.

The motorised power cam bolt is equipped with a fail unlocked function, which means the unlocking is driven by spring power in the event of a power failure.

The swing bolt can be concealed within the door frame or door leaf.

### Scope of delivery

- 1 x Electromotive swing bolt
- 1 x Strike plate
- 1 x Operating instructions



### The advantages at a glance

- Motor has a fail-unlocked function
- The bolt is unlocked if the positioning of the strike plate and bolt are not exact.
- For horizontal and vertical fitting (when fitted horizontally, only possible to close downwards)
- Unlocking under max. 100N pre-load when supply current is present.
- Unlocking under max. 30 N pre-load without supply current.
- Easily changeable from fail-unlocked, to fail-locked.
- Surface fitting with optional casing possible; can also be mounted to glass doors with additional kit
- Automatic unlocking for 3 seconds via integrated control system
- Integrated monitoring contact for bolt position
- Suitable for short and permanent release
- Suitable for swing doors
- Strike plate with integrated magnet for detecting the door status
- Please observe: not permitted for escape and escape route doors
- Fire protection approval up to 4 hours according to AS1905.1.2005

### Technical attributes

Input operating voltage	12V +15%/-0% - 24V +15%/-15%
Switch-on current	500 mA
Holding current (Fail-unlocked)	130 mA
Version	Fail-unlocked
Break-in resistance	Max. 10,000 N when embedded in the assembled strike plate
Diameter dead bolt	11 mm
Bolt throw	42 mm
Housing width	24 mm
Housing length	210 mm
Face plate length	256 mm
Width face plate	30 mm
Face plate thickness	3 mm
Installation position	Vertical and horizontal (closed downwards only)
Durability test	> 300,000 cycles
DIN direction	1
DIN direction	Universal
Required power supply	12 - 24V 1 A, regulated

# Motorised power cam bolt model 842

## Accessoires



### Masonry Box 842-4

Stainless steel masonry box for the mounting plate of the motorised power cam bolt, model 842-SA or matching strike plate.

Additional features:  
Surface mounting on glass doors possible with optional glue kit 760-RK1500 and screening plate 842-7.

Scope of delivery:  
1 mounting case

Technical attributes	
Length	274 mm
Width	47.5 mm
Depth	34 mm

Article / Feature	Order no.
Mounting case	8 4 2 - 4 - - - - - 3 5



### Screening Plate Model 842-7

Stainless steel plate with adhesive film, suitable for 843-4 masonry box and for 842-4 masonry box. Protects mounted locks from outside view on glass doors.

Scope of delivery:  
1 screening plate

Technical attributes	
Length	274 mm
Width	48 mm
Depth	1 mm

Article / Feature	Order no.
Screening Plate	8 4 2 - 7 - - - - - 3 5

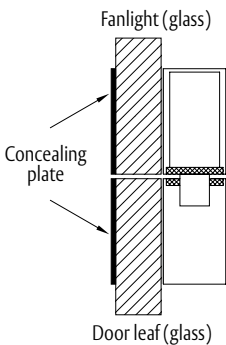


### Adhesive kit

Two-component adhesive kit, consisting of adhesive and activator. Adhesive set contains sufficient adhesive for about 4 installations. Six cleaning cloths are included as accessories.

Technical attributes	
Version	Two-component adhesive

Article / Feature	Order no.
For adhesive mounting	7 6 0 - R K 1 5 0 0 - - - 0 0



### Mounting on glass doors

When mounting on glass doors, both housings are glued directly to the glass surfaces using the special glue. A self-adhesive counter plate is glued to the glass on the opposite sides to improve the appearance.

# Electric bolt model 843

## Drop bolt for security applications / door locking

### Secure, convenient and compact

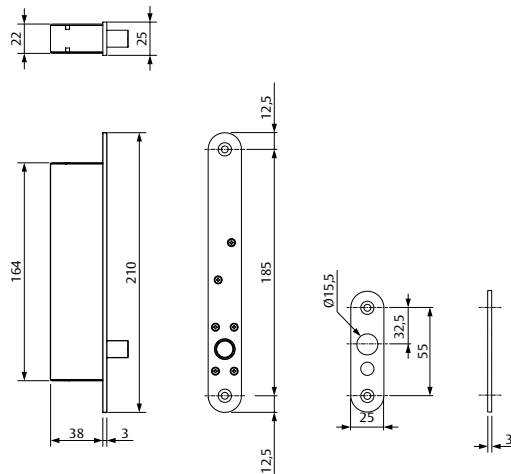
When a conventional lock with a mechanical locking system doesn't meet requirements with regards to security or convenience, a deadbolt as a supplementary locking device is often the best solution. effeff drop bolts are also recommendable as an additional security measure due to their compact design. The effeff drop bolt range includes models, which are suitable for use in both private and commercial buildings. The effeff drop bolt range includes models, which are suitable for use in both private and commercial buildings. The many different installation types and slim designs enable these deadbolts to be fitted to nearly all types of doors, from standard doors through to glass doors.

### Areas of use:

- Banks
- IT areas
- Laboratories
- Museums
- Power plants
- Industrial plants
- Doors to security rooms
- Apartments
- Residential units

### Drop bolt model 843

The effeff 843 deadbolt's compact design and sophisticated accessories enable it to be fitted in a variety of locations. Thus it can offer optimum security as an additional door locking system in both commercial and private buildings.



Technical attributes	
Rated operating voltage tolerance range	± 10 %
Input operating voltage	12-24 V DC
12 V starting current	1500 mA
24 V starting current	1400 mA
12 V latching current	130 mA
24 V latching current	80 mA
Housing length	164 mm
Housing width	22 mm
Housing depth	38 mm
Holding power	10000 N
Width face plate	25 mm
Face plate thickness	3 mm
Material face plate	Stainless steel
Diameter dead bolt	12.7 mm
Bolt throw	16 mm
Distance between faceplate and strike plate	max. 6 mm
Installation position	Vertical and horizontal (closed downwards only)

Article / Feature	Order no.
Electric drop bolt (model 843) fail safe mode 12-24 V DC, incl. strike plate (short)	8 4 3 - 4 - - - - - Q 4 1
Electric drop bolt (model 843) fail secure 12-24 V DC, incl. strike plate (short)	8 4 3 - 4 - 3 0 - - - Q 4 1

## Drop bolts model 843-3

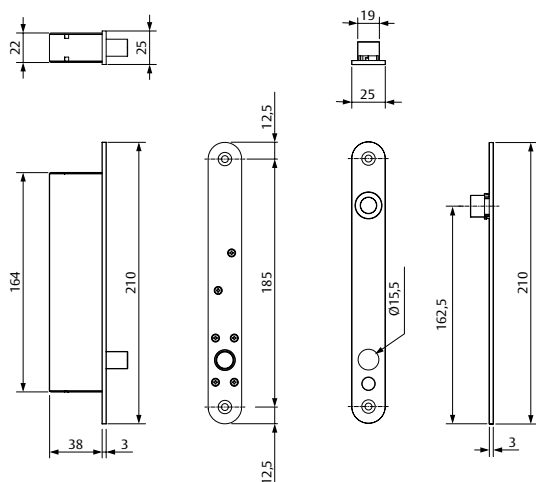
### Drop bolt for security applications / door locking



#### Drop bolt model 843-3

The effeff 843-3 deadbolt's compact design and sophisticated accessories enable it to be fitted in a variety of locations. Thus it can offer optimum security as an additional door locking system in both commercial and private buildings.

The built-in magnet latch optimizes the positioning and ensures reliable locking.



#### Technical attributes

Rated operating voltage tolerance range	± 10 %
Input operating voltage	12-24 V DC
12 V starting current	1500 mA
24 V starting current	1400 mA
12 V latching current	130 mA
24 V latching current	80 mA
Housing length	164 mm
Housing width	22 mm
Housing Depth	41 mm
Holding power	10000 N
Width face plate	25 mm
Face plate thickness	3 mm
Material face plate	Stainless steel
Diameter dead bolt	12.7 mm
Bolt throw	16 mm
Distance between faceplate and strike plate	max. 6 mm
Installation position	Vertical and horizontal (closed downwards only)

#### Article / Feature

Article / Feature	Order no.
Electric drop bolt (model 843-3) fail safe 12-24 V DC, incl. strike plate (long) with built-in magnet latch	8 4 3 - 3 - - - - - Q 4 1
Electric drop bolt (model 843-3) fail secure 12-24 V DC, incl. strike plate (long) with built-in magnet latch	8 4 3 - 3 - 3 0 - - - - Q 4 1

# Drop bolt model 843

## Accessories



### Flat strike plate long, with latch magnet (model 843-3)

Flat strike plate for electric drop bolt with magnet latch (model 843-3)

Technical attributes	
Length	210 mm
Thickness	3 mm
Material	Stainless steel
Width	25 mm

Article / Feature	Order no.
Flat strike plate, with latch magnet (model 843-3)	8 4 3 - 3 - 1 - - - - - 3 5



### Flat strike plate short (model 843)

Suitable for 843 drop bolts, with integrated permanent magnet as mating component for door contact (reed contact).

Technical attributes	
Length	80 mm
Thickness	3 mm
Material	Stainless steel
Width	25 mm

Article / Feature	Order no.
For drop bolt 843; short; with magnet latch; stainless steel	8 4 3 - 2 - - - - - 3 5



### Mounting case surface installation (model 843/843-3)

With adhesive strips included

Technical attributes	
Housing length	225 mm
Housing width	27 mm
Housing Depth	47 mm
Material housing	Stainless steel

Article / Feature	Order no.
Mounting case surface installation (model 843/843-3)	8 4 3 - 4 - - - - - 3 5



### Screening plate (model 843/843-3)

With adhesive strips included

Technical attributes	
Thickness	1 mm
Material	Stainless steel
Height	225 mm
Width	46.5 mm

Article / Feature	Order no.
For adhesive mounting; stainless steel	8 4 3 - 7 - - - - - 3 5

# Drop bolt model 843ZY

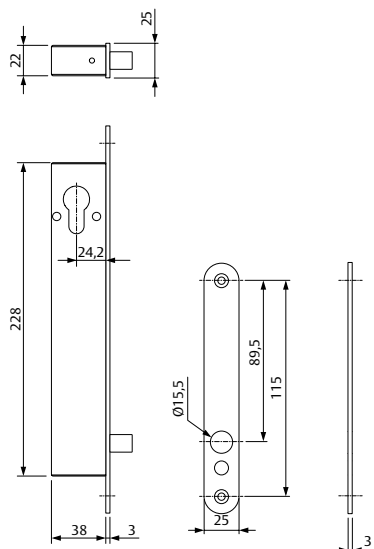
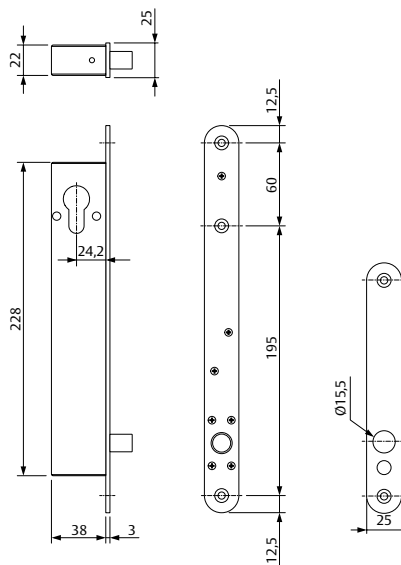
## Drop bolt for security applications / door locking



### Drop bolt model 843ZY

The effeff drop bolt 843ZY enables a wide range of installation options thanks to its compact design and well thought-out accessories. As an additional lock, it offers optimal security in both commercial and residential areas.

With its hole, this variant also offers the function of a mechanical emergency release.



Technical attributes	
Rated operating voltage tolerance range	± 10 %
Input operating voltage	12-24 V DC
12 V starting current	1500 mA
24 V starting current	1400 mA
12 V latching current	130 mA
24 V latching current	80 mA
Housing length	228 mm
Housing width	22 mm
Housing Depth	38 mm
Holding power	10000 N
Width face plate	25 mm
Face plate thickness	3 mm
Material face plate	Stainless steel
Diameter dead bolt	12.7 mm
Bolt throw	16 mm
Distance between faceplate and strike plate	max. 6 mm
Installation position	Vertical and horizontal (closed downwards only)

Article / Feature	Order no.
Electric drop bolt (model 843ZY) fail secure 12-24 V DC for profile cylinder incl. strike plate (short)	8 4 3 Z Y - 1 - - - - - Q 4 1

Article / Feature	Order no.
Electric bolt (model 843ZY) fail-locked 12-24 V DC for profile cylinder incl. strike plate (long)	8 4 3 Z Y - 2 - - - - - Q 4 1

# Drop bolt 843, 843ZY

## Accessories



### Flat strike plate for profile cylinder long (model 843ZY)

Flat strike plate for electric drop bolt with hole (model 843ZY)

Technical attributes	
Thickness	3 mm
Height	280 mm
Width	25 mm
Color	Stainless steel

Article / Feature	Order no.
Flat strike plate for profile cylinder long (model 843ZY)	8 4 3 Z Y - 3 - - - - - 3 5



### Flat strike plate for profile cylinder short (model 843ZY)

Flat strike plate for electric drop bolt with hole (model 843ZY)

Technical attributes	
Height	140 mm
Width	25 mm
Depth	3 mm
Color	Stainless steel

Article / Feature	Order no.
Flat strike plate for profile cylinder short (model 843ZY)	8 4 3 Z Y - 5 - - - - - 3 5



### Mounting case model 843ZY

Masonry box for electric drop bolt with hole (model 843ZY)

Technical attributes	
Housing length	295 mm
Housing width	27 mm
Housing Depth	47 mm
Material housing	Stainless steel

Article / Feature	Order no.
Mounting case with profile cylinder perforation (model 843ZY)	8 4 3 Z Y - 4 - 1 - - - - 3 5



### Mounting case for flate strike plate long (model 843ZY)

Mounting casing for electric bolts without hole (model 843ZY)

Technical attributes	
Housing length	295 mm
Housing width	27 mm
Housing Depth	47 mm
Material housing	Stainless steel

Article / Feature	Order no.
Mansory box for flate strike plate long (model 843ZY)	8 4 3 Z Y - 4 - 2 - - - - 3 5



### Screening plate for profile cylinder (model 843ZY)

With adhesive strips included.

Technical attributes	
Height	295 mm
Width	47 mm
Depth	1 mm
Color	Stainless steel

Article / Feature	Order no.
Screening plate for profile cylinder (model 843ZY)	8 4 3 Z Y - 7 - - - - - 3 5

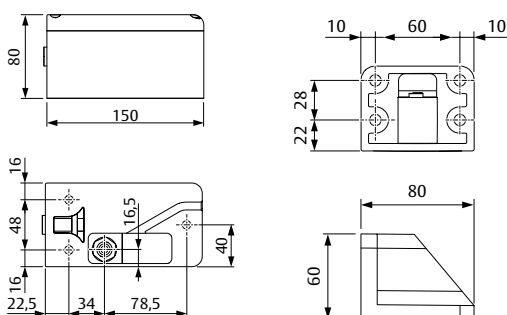
# Drop bolt model 843G

## Drop bolt for gates and accessory



### Drop bolt model 843G

Electric drop bolt (model 843G) 12-24 V DC for securing gates, incl. strike  
 - suitable for outdoor use  
 - locking mechanism for large gates



#### Technical attributes

Rated operating voltage tolerance range	± 15 %
Input operating voltage	12-24 V DC
12 V starting current	1000 mA
24 V starting current	500 mA
12 V latching current	40 mA
24 V latching current	30 mA
Length	150 mm
Width	80 mm
Height	80 mm
Diameter lock deadbolt	18 mm
Lock bolt throw	30 mm
Holding power	50000 N
Installation position	Vertical and horizontal (closed downwards only)

#### Article / Feature

Article / Feature	Order no.
12-24 V DC for securing gates, incl. strike	8 4 3 G - 1 - - - - - Q 4 1



### Strike (model 843G)

#### Technical attributes

Length	60 mm
Width	80 mm
Height	80 mm

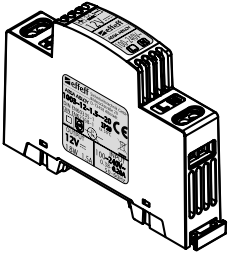
#### Article / Feature

Article / Feature	Order no.
Strike (model 843G)	8 4 3 G - 1 - - - - - 3 5



# Drop bolt model 842/843/843ZY

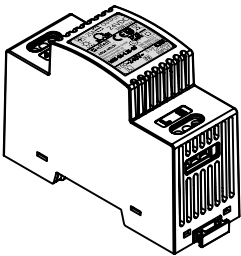
## Power supplies



Power supply unit model 1003 12 V DC

Technical attributes	
Nominal power	18 W
Max. continuous current	No
Output voltage	12 VDC SELV
Output current	1.5 A
Input operating voltage	100-240 VDC
Rated current consumption	0,59/0,30 A
Overload protection	Electronical
Protection rating	II
Operating temperature range	-10°C + 50°C
Length	93 mm
Height	68 mm
Mounting method	Top-hat rail distributor
Sub-units	1
Width	17,5 mm
Class of protection	IP 20
Material housing	plastic
Approval DIN EN 60335-1	yes
Approval DIN EN 62368-1	yes

Article / Feature	Order no.
12 V DC, stabilised, 1.5 A, top-hat rail	1 0 0 3 - 1 2 - 1 . 5 - - 2 0



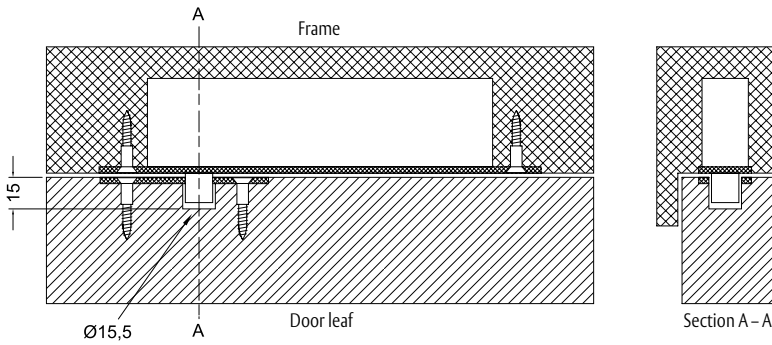
Power supply unit model 1003 24 V DC

Technical attributes	
Nominal power	30 W
Max. continuous current	24 ... 28 VDC
Output voltage	24 VDC SELV
Output current	1.25 A
Input operating voltage	100/240 VDC
Rated current consumption	0.59/0.30 A
Overload protection	Electronical
Protection rating	II
Operating temperature range	-10°C + 50°C
Length	93 mm
Height	68 mm
Mounting method	Top-hat rail distributor
Sub-units	2
Width	35 mm
Class of protection	IP 20
Material housing	plastic
Approval DIN EN 60335-1	yes
Approval DIN EN 62368-1	yes

Article / Feature	Order no.
24 V DC, stabilised, 1.25 A, top-hat rail	1 0 0 3 - 2 4 - 1 . 2 5 - - 2 0

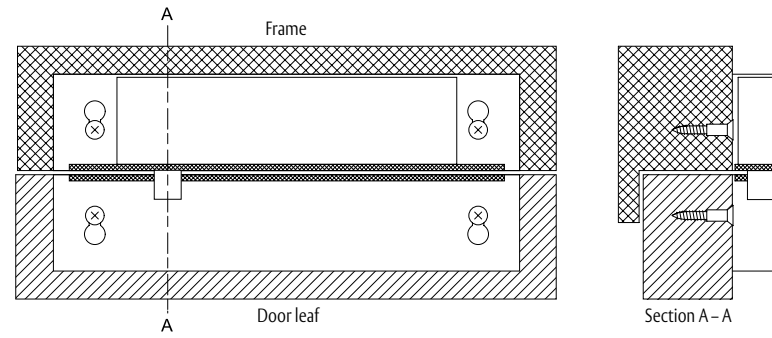
# Door bolt model 843/843ZY

## Mounting tips



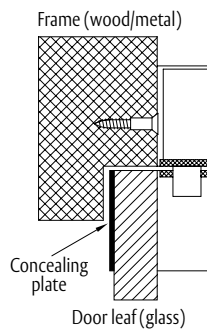
### Installation of electric bolt in frame profile

The illustration shows the installed electric bolt and the short striking plate in a closed door. The bolt engages in the striking plate and the door is locked. In order for the bolt to securely lock the door, it must engage in the striking plate without obstruction. The main lock and / or door closer are necessary to ensure the required position of the door leaf.



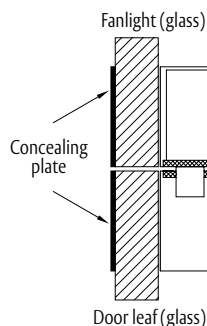
### Surface mounting of electric bolt and long strike plate in stainless steel casing

For surface mounting, the electric bolt and the long strike plate are mounted in a housing. The housing with the electric bolt is secured on the front of the frame and the housing with the strike plate on the door leaf or vice versa .



### Mounting on glass doors with frame

When mounting the electric bolt on glass doors, the housing for the bolt is attached to the door frame in the same manner as for surface mounting the housing. However, the housing with the long strike plate is directly glued to the door leaf using the special glue. The self-adhesive counter plate is also glued to the door leaf on the opposite side to improve the appearance.



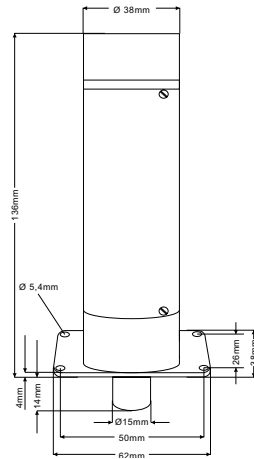
### Mounting on glass doors

When mounting on glass doors, both housings are glued directly to the glass surfaces using the special glue. A self-adhesive counter plate is glued to the glass on the opposite sides to improve the appearance.

# Drop bolt model 1841 and 3841



## Drop bolt model 1841



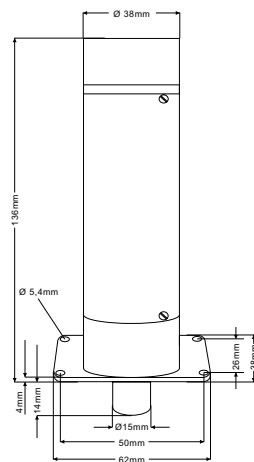
The door bolts are designed for interior use and should be fitted (vertically) at the top of the door frame. Locking is performed by a 13 mm extension locking bolt.

Technical attributes	
Rated current consumption	0.8 A (12 V) / 0.5 A (24 V)
Load capability monitoring contact	24 V / 1 A
Variant	fail-locked
Diameter	38 mm
Length	136
Diameter lock deadbolt	15 mm
Lock bolt throw	13 mm
Overhang when lock bolt drawn in	1 mm
Installation position	Vertical

Article / Feature	Order no.
Fail-locked; 12 V; narrow design; without matching component	1 8 4 1 - 1 - - - - - E 9 1
Fail-locked; 24 V; narrow design; without matching component	1 8 4 1 - 1 - - - - - F 9 1
Fail-locked; 12 V; narrow design; without matching component; monitoring contact	1 8 4 1 - 1 R R - - - - E 9 1
Fail-locked; 24 V; narrow design; without matching component; monitoring contact	1 8 4 1 - 1 R R - - - - F 9 1



## Door deadbolt model 3841



The door bolts are designed for interior use and should be fitted (vertically) at the top of the door frame. Locking is performed by a 13 mm extension locking bolt.

Technical attributes	
Rated current consumption	0.8 A (12 V) / 0.5 A (24 V)
Load capability monitoring contact	24 V / 1 A
Variant	fail-unlocked
Diameter	38 mm
Length	136 mm
Diameter lock deadbolt	15 mm
Lock bolt throw	13 mm
Overhang when lock bolt drawn in	1 mm
Installation position	Vertical

Article / Feature	Order no.
Fail-unlocked; 12 V; narrow design; without matching component	3 8 4 1 - 1 - - - - - E 9 1
Fail-unlocked; 24 V; narrow design; without matching component	3 8 4 1 - 1 - - - - - F 9 1
Fail-unlocked; 12 V; narrow design; without matching component; monitoring contact	3 8 4 1 - 1 R R - - - - E 9 1
Fail-unlocked; 24 V; narrow design; without matching component; monitoring contact	3 8 4 1 - 1 R R - - - - F 9 1

# Drop bolt 1841 and 3841

## Accessories



**Matching component model 840-2**  
Mating component for doors with stop.

Technical attributes	
Height	43 mm
Width	24 mm
Depth	32 mm

Article / Feature	Order no.
For doors with stop	8 4 0 - 2 - - - - - 0 0



**Accessories for door deadbolt 1841(RR)/3841(RR) and 1842(RR)**  
Suitable for swing or rotary doors.

Technical attributes	
Height	43 mm
Width	32 mm
Depth	20 mm

Article / Feature	Order no.
For swing and revolving doors	8 4 5 - 2 - - - - - 0 0



**Rim-type housing**

Technical attributes	
Height	48 mm
Width	73 mm
Depth	174 mm

Article / Feature	Order no.
For door bolt models 1841 / 3841	8 4 8 - 1 - - - - - 0 0
For door bolt in housing 848-1	8 4 8 - 2 - - - - - 0 0

# Electric bolts

## Accessories



### 10-pin plug-in lead cover 10314-20-20

Lead cover for concealed installation.

With integrated break-proof flex cable, clamp-plug connection technology and installation housing on both sides.

Installation system for minimal chamber dimensions and unobstructed movement. This system is particularly suitable for door systems with reduced spacing for hinges and inside hinges.

The advantage of this installation type is being able to position the door nearly flush with the frame (<1 mm reveal when door is closed). Minimal gaps for door rotation, as with inside hinges, for instance, do not result in the door jamming.

Technical attributes	
Input operating voltage	24 V +20%
Contact resistance per signal	0.35 Ohm
Max. current consumption	1 A 100% ED, 4 A max. 1 sec. 10% ED
Variant	Installation casing on both sides
Area of application	Installation system for small chamber dimensions and collision-free movement
Version	Plug-in device
Material installation casing	Stainless steel
Material spiral hose	Stainless steel
Max. permissible horizontal rotation	200 mm
Length	519 mm
Width	24 mm
Depth	33 mm
Cycles at 180 turns	1000000
Signal transmission	10-pin

Article / Feature	Order no.
Terminal/plug-in 10-pin, concealed, long, installation casing on both sides	1 0 3 1 4 - 2 0 - 2 0 - - 0 0



### Lead cover 10314-14

For direct power transmission from the door frame to the door leaf. Corrosion-resistant, flexible metal hose. Fixing caps for mounting on door frame and door leaf.

Technical attributes	
Input operating voltage	24 V +20%
Contact resistance per signal	0.21 Ohm
Max. current consumption	1 A 100% ED, 4 A max. 1 sec. 10% ED
Length installation casing / mounting plate	330 mm / 200 mm
Chamber dimension	> 16 mm
Installation length	340 mm
Version	Plug-in device
Variant	Installation casing on one side/angular mounting plate
Material mounting plate / installation casing	Stainless steel
Material spiral hose	Stainless steel
Max. permissible horizontal rotation	100 mm
Width installation casing / mounting plate	24 mm / 24 mm
Depth installation casing / mounting plate	33 mm / 19 mm
Cycles at 180 turns	1000000
Signal transmission	10-pin

Article / Feature	Order no.
Terminal/plug-in 10-pin, concealed, short, installation casing on one side	1 0 3 1 4 - 1 4 - - - - 0 0

# Electric bolts

## Accessories



### Concealed lead cover 10312-14

24 mm width installation casing.  
Lead cover for concealed installation.  
Suitable for feeding cables with installation housing on one side for wood, metal and synthetic profiles.  
The 10313-24 accessory set with 2 curved end pieces lends itself as an accessory for the installation casing in wooden profiles.

Technical attributes	
Length	330 mm
Width	24 mm
Depth	17 mm
Version	Cable guide
Variant	Installation casing on one side
Material installation casing	Stainless steel
Material spiral hose	Stainless steel
Max. cable diameter	7 mm
Max. permissible horizontal rotation	100 mm

Article / Feature	Order no.
Cable guide, concealed, short, installation casing on one side	1 0 3 1 2 - 1 4 - - - - 0 0



### Concealed cable Transition 10312-20

Lead cover for concealed installation  
Suitable for feeding cables with installation housing on one side for wood, metal and synthetic profiles.  
With cable housing for cable lock.  
The 10313-24 accessory set with 2 curved end pieces lends itself as an accessory for the installation casing in wooden profiles.

Technical attributes	
Version	Cable guide
Variant	Installation casing on one side
Material installation casing	Stainless steel
Material spiral hose	Stainless steel
Max. cable diameter	7 mm
Max. permissible horizontal rotation	200 mm
Length installation casing / cable housing	519 mm / 110 mm
Width installation casing / cable housing	24 mm / 16 mm
Depth installation casing / cable housing	17,5 mm / 32 mm

Article / Feature	Order no.
Cable guide, concealed, long, installation casing on one side	1 0 3 1 2 - 2 0 - - - - 0 0

# Electric bolts

## Accessories



### Lead cover for open installation

For direct power transmission from the door frame to the door leaf. Corrosion-resistant, flexible metal hose. Fixing caps for mounting on door frame and door leaf.

Technical attributes	
Version	For open installation
Material	Brass, nickel-coated
Length	18 cm
Inside diameter	7 mm
Net weight	0.02 kg

Article / Feature	Order no.
For open installation; nickel-coated brass; length 18 cm	1 0 3 1 8 - - - - - 0 0



### Mounting set model 10313-24

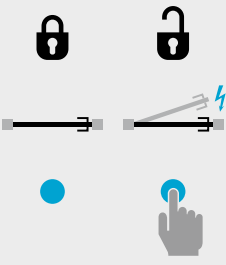
This saves time when installing the concealed lead covers (one-sided and on both sides) in wood structures. It consists of two radius end pieces and 5 stainless steel screws to fasten the installation housing and the plate on the opposite side. When using the 10313 installation set, only a cut-out is required, with no finishing work. There is no longer the need to chisel out to fit the installation housing and the square fastening plate.

Technical attributes	
Length	27,5 mm
Width	24 mm
Depth	18 mm

Article / Feature	Order no.
Timber construction mounting set for lead covers with installation casing	1 0 3 1 3 - 2 4 - - - - - 0 0

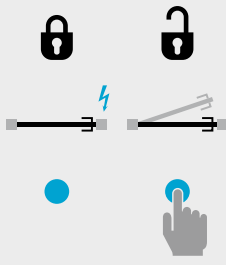
# Functional modes

## Fail-locked, fail-unlocked



**Fail-locked function**

The door is locked voltage-free. It can be opened during contact input. When operated with an alternating current, a buzzing sound can be heard. There is no buzzing sound with direct current operation.



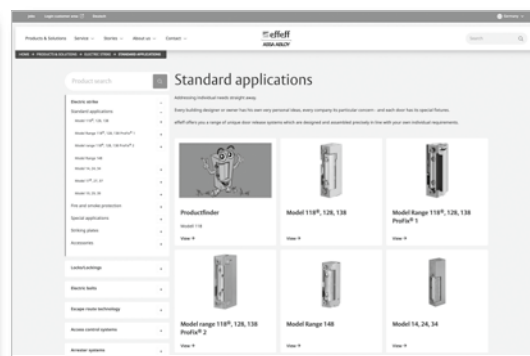
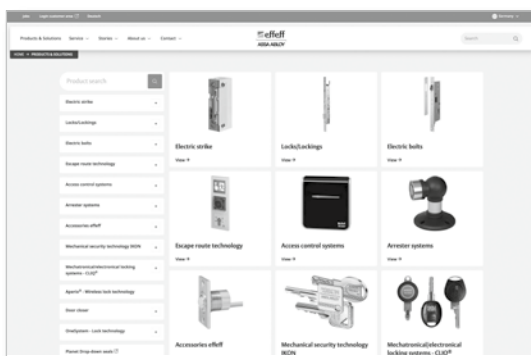
**Fail-unlocked function**

The door is unlocked without power and locked with power. To be operated with DC voltage only. Application; interlocking locks.

You can also find more information at:  
[www.effeff.de](http://www.effeff.de)

**Our product catalogue on the Internet**

Here you will find a clear structure according to our product areas. Via a simple click you can view a detailed data sheet by simply clicking on it.



**Hotline**  
 Technical advice

**+49 7431 123-381**

**Hotline**  
 Sales / Order processing

**+49 7431 123-700**

**Online customer area / Service**











The ASSA ABLOY Group is the global leader in access solutions. Every day we help people feel safe, secure and experience a more open world.

**ASSA ABLOY**  
Opening Solutions

ASSA ABLOY Sicherheitstechnik GmbH  
Bildstockstraße 20  
72458 Albstadt  
DEUTSCHLAND  
Tel. +49 7431 123-700  
export.effeff@assaabloy.com  
[www.assaabloy.com/de](http://www.assaabloy.com/de)