

.316 Hangschloss mit Schutzkappe IP67

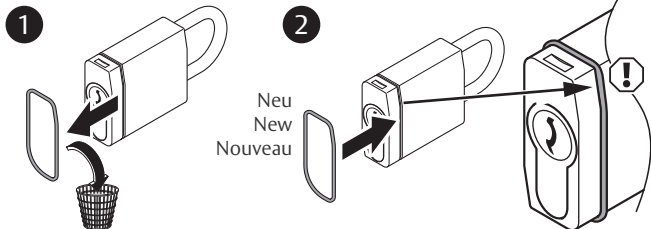
IKON

ASSA ABLOY

Montageanleitung

PB00105 00017 000 0A 07.2017

ASSA ABLOY, the global leader
in door opening solutions



Nach der Montage kann die Schutzkappe nicht mehr ohne Zerstörung entfernt werden.

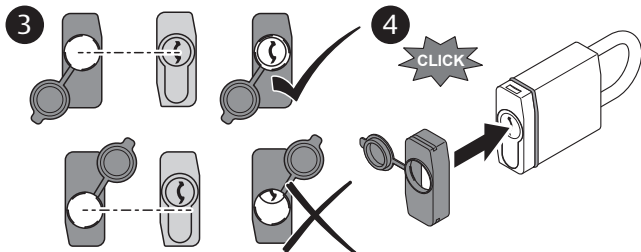
Schutzkappe korrekt ausrichten! ③

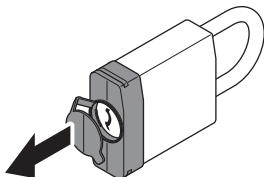
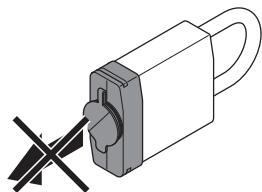
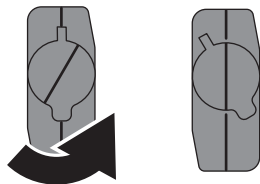
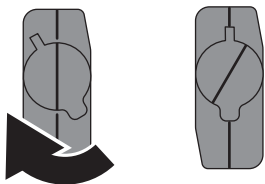
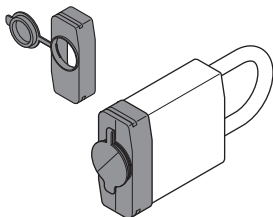
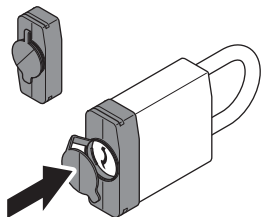
After mounting the protective cap can no longer be removed without destroying it.

Align the protective cap correctly! ③

Une fois le montage effectué, le capuchon de protection ne peut plus être retiré sans être détruit.

Orientez correctement le capuchon ! ③





ASSA ABLOY
Sicherheitstechnik GmbH
AttilasträÙe 61 - 67
12105 Berlin
DEUTSCHLAND
berlin@assaabloy.com
Tel. +49030 8106-0



www.assaabloy.de

IKON
ASSA ABLOY

ASSA ABLOY, the global leader
in door opening solutions